

Coaxial

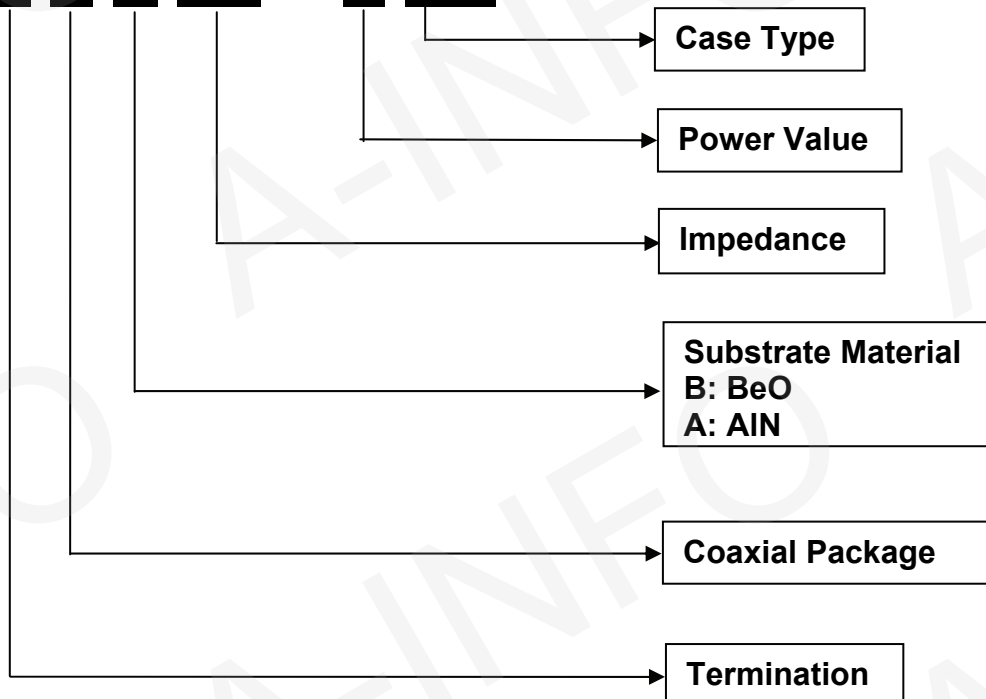


- ◆ Resistance*: 50Ω
- ◆ Power: 0.5-500W
- ◆ Frequency Range*: DC-6GHz
- ◆ Operation Temperature: -55 ~ +85°C
- ◆ RoHS Compliant
- ◆ *Customization is available

Termination – Coaxial (TCB series)

Explanation to P/N

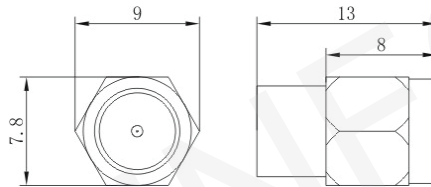
T C B 50 - 2 RB



Coaxial

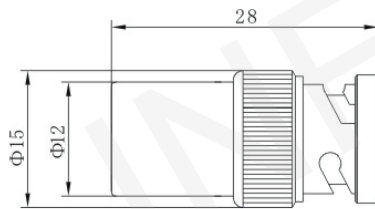
P/N	Power (W)	Frequency (GHz)	Resistance (Ω)	VSWR max	Connector	Page
TCB50-0.5RS	0.5	DC-6	50	1.25:1	SMA-M	30
TCB50-2RB	2	DC-6	50	1.25:1	BNC-M	30
TCB50-2RS	2	DC-6	50	1.25:1	SMA-M	30
TCB50-2RN	2	DC-6	50	1.25:1	N-M	31
TCB50-2RT	2	DC-6	50	1.25:1	TNC-M	31
TCB50-5RS	5	DC-6	50	1.25:1	SMA-M	31
TCB50-5RT	5	DC-6	50	1.25:1	TNC-M	32
TCB50-5RTB	5	DC-6	50	1.25:1	TNC-M	32
TCB50-5RN	5	DC-6	50	1.25:1	N-M	32
TCB50-5RNB	5	DC-6	50	1.25:1	N-M	33
TCB50-5RF	5	DC-6	50	1.25:1	Flange	33
TCB50-10RN	10	DC-6	50	1.25:1	N-M	33
TCB50-10SN	10	DC-6	50	1.25:1	N-M	34
TCB50-10SNB	10	DC-6	50	1.25:1	N-M	34
TCB50-20RN	20	DC-6	50	1.25:1	N-M	34
TCB50-20SN	20	DC-6	50	1.25:1	N-M	35
TCB50-30RN	30	DC-6	50	1.25:1	N-M	35
TCB50-30SN	30	DC-6	50	1.25:1	N-M	35
TCB50-50RN	50	DC-6	50	1.35:1	N-M	36
TCB50-50SN	50	DC-6	50	1.35:1	N-M	36
TCB50-80RN	80	DC-6	50	1.35:1	N-M	36
TCB50-80SN	80	DC-6	50	1.35:1	N-M	37
TCB50-100RN	100	DC-6	50	1.35:1	N-M	37
TCB50-100SN	100	DC-6	50	1.35:1	N-M	37
TCB50-150SN	150	DC-4	50	1.35:1	N-M	38
TCB50-200SN	200	DC-3	50	1.20:1	N-M	38
TCB50-300SN	300	DC-3	50	1.20:1	N-M	38
TCB50-300SNB	300	DC-3	50	1.20:1	N-M	39
TCB50-500SN	500	DC-3	50	1.25:1	N-M	39

Coaxial



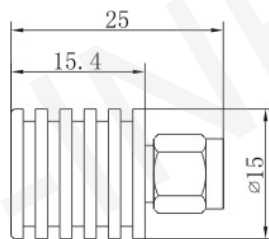
P/N		TCB50-0.5RS
Power(W)		0.5
Resistance(Ω)*		50
Frequency(GHz)*		DC-6
VSWR	DC-3GHz	1.20:1 max
	DC-6GHz	1.25:1 max
Connector*		SMA-M
Operation Temperature($^{\circ}$ C)		-55~+85
Size(mm)*		Φ 9×13
Weight(KG)		0.0035

* Customization is available.



P/N		TCB50-2RB
Power(W)		2
Resistance(Ω)*		50
Frequency(GHz)*		DC-6
VSWR	DC-3GHz	1.20:1 max
	DC-6GHz	1.25:1 max
Connector*		BNC-M
Operation Temperature($^{\circ}$ C)		-55~+85
Size(mm)*		Φ 15×28
Weight(KG)		0.015

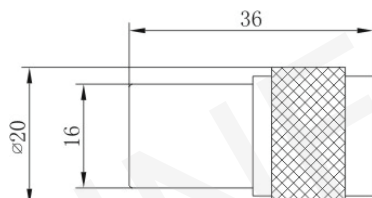
* Customization is available.



P/N		TCB50-2RS
Power(W)		2
Resistance(Ω)*		50
Frequency(GHz)*		DC-6
VSWR	DC-3GHz	1.15:1 max
	DC-6GHz	1.25:1 max
Connector*		SMA-M
Operation Temperature($^{\circ}$ C)		-55~+85
Size(mm)*		Φ 15×25
Weight(KG)		0.017

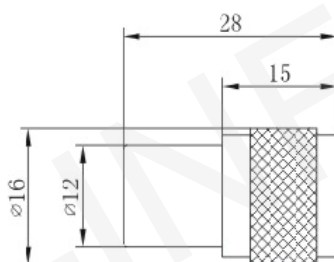
* Customization is available.

Coaxial



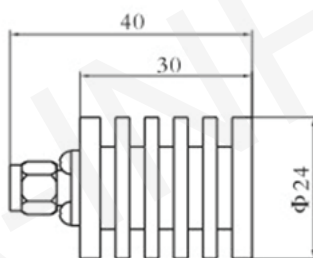
P/N		TCB50-2RN
Power(W)		2
Resistance(Ω)*		50
Frequency(GHz)*		DC-6
VSWR	DC-3GHz	1.15:1 max
	DC-6GHz	1.25:1 max
Connector*		N-M
Operation Temperature($^{\circ}$ C)		-55~+85
Size(mm)*		Φ 20×36
Weight(KG)		0.04

* Customization is available.



P/N		TCB50-2RT
Power(W)		2
Resistance(Ω)*		50
Frequency(GHz)*		DC-6
VSWR	DC-3GHz	1.20:1 max
	DC-6GHz	1.25:1 max
Connector*		TNC-M
Operation Temperature($^{\circ}$ C)		-55~+85
Size(mm)*		Φ 16×28
Weight(KG)		0.02

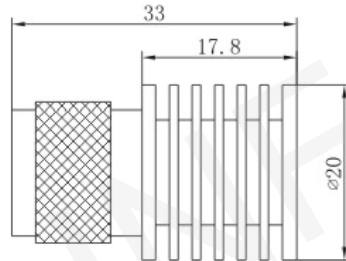
* Customization is available.



P/N		TCB50-5RS
Power(W)		5
Resistance(Ω)*		50
Frequency(GHz)*		DC-6
VSWR	DC-3GHz	1.15:1 max
	DC-6GHz	1.25:1 max
Connector*		SMA-M
Operation Temperature($^{\circ}$ C)		-55~+85
Size(mm)*		Φ 24×40
Weight(KG)		0.031

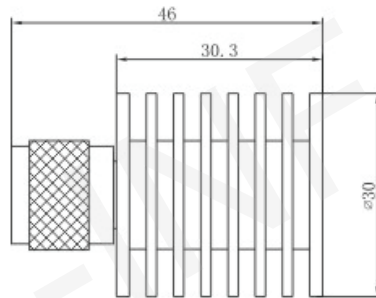
* Customization is available.

Coaxial



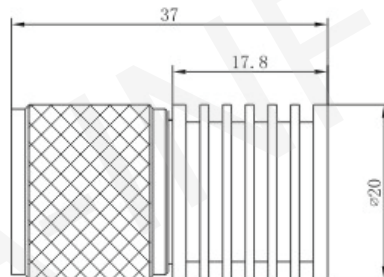
P/N		TCB50-5RT
Power(W)		5
Resistance(Ω)*		50
Frequency(GHz)*		DC-6
VSWR	DC-3GHz	1.15:1 max
	DC-6GHz	1.25:1 max
Connector*		TNC-M
Operation Temperature($^{\circ}$ C)		-55~+85
Size(mm)*		Φ 20 \times 33
Weight(KG)		0.04

* Customization is available.



P/N		TCB50-5RTB
Power(W)		5
Resistance(Ω)*		50
Frequency(GHz)*		DC-6
VSWR	DC-3GHz	1.15:1 max
	DC-6GHz	1.25:1 max
Connector*		TNC-M
Operation Temperature($^{\circ}$ C)		-55~+85
Size(mm)*		Φ 30 \times 46
Weight(KG)		0.035

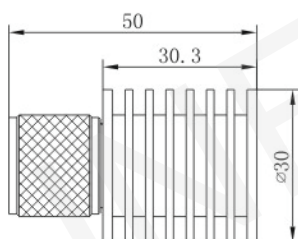
* Customization is available.



P/N		TCB50-5RN
Power(W)		5
Resistance(Ω)*		50
Frequency(GHz)*		DC-6
VSWR	DC-3GHz	1.15:1 max
	DC-6GHz	1.25:1 max
Connector*		N-M
Operation Temperature($^{\circ}$ C)		-55~+85
Size(mm)*		Φ 20 \times 37
Weight(KG)		0.05

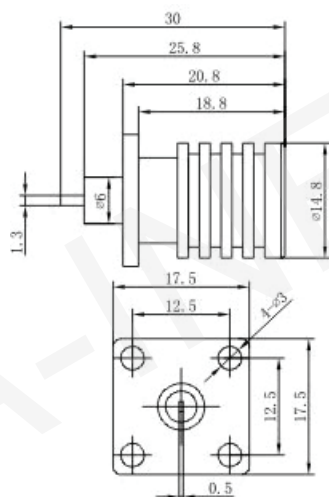
* Customization is available.

Coaxial



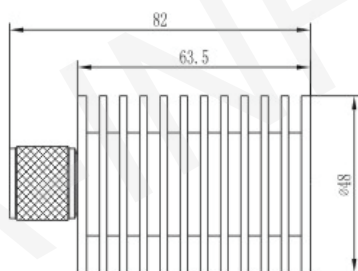
P/N		TCB50-5RNB
Power(W)		5
Resistance(Ω)*		50
Frequency(GHz)*		DC-6
VSWR	DC-3GHz	1.15:1 max
	DC-6GHz	1.25:1 max
Connector*		N-M
Operation Temperature($^{\circ}$ C)		-55~+85
Size(mm)*		Φ 30×50
Weight(KG)		0.06

* Customization is available.



P/N		TCB50-5RF
Power(W)		5
Resistance(Ω)*		50
Frequency(GHz)*		DC-6
VSWR	DC-3GHz	1.15:1 max
	DC-6GHz	1.25:1 max
Connector*		Flange
Operation Temperature($^{\circ}$ C)		-55~+85
Size(mm)*		Φ 14.8×30
Weight(KG)		0.0185

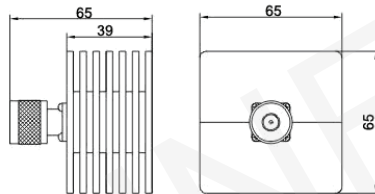
* Customization is available.



P/N		TCB50-10RN
Power(W)		10
Resistance(Ω)*		50
Frequency(GHz)*		DC-6
VSWR	DC-3GHz	1.15:1 max
	DC-6GHz	1.25:1 max
Connector*		N-M
Operation Temperature($^{\circ}$ C)		-55~+85
Size(mm)*		Φ 48×82
Weight(KG)		0.29

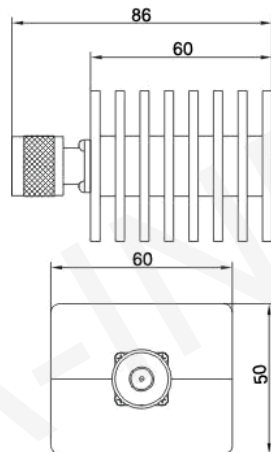
* Customization is available.

Coaxial



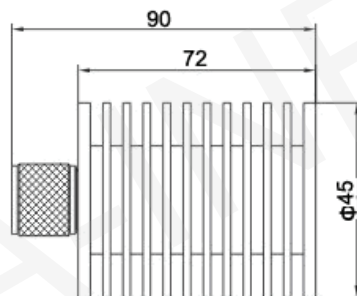
P/N		TCB50-10SN
Power(W)		10
Resistance(Ω)*		50
Frequency(GHz)*		DC-6
VSWR	DC-3GHz	1.15:1 max
	DC-6GHz	1.25:1 max
Connector*		N-M
Operation Temperature($^{\circ}$ C)		-55~+85
Size(mm)*		39×65×65
Weight(KG)		0.304

* Customization is available.



P/N		TCB50-10SNB
Power(W)		10
Resistance(Ω)*		50
Frequency(GHz)*		DC-6
VSWR	DC-3GHz	1.15:1 max
	DC-6GHz	1.25:1 max
Connector*		N-M
Operation Temperature($^{\circ}$ C)		-55~+85
Size(mm)*		60×60×50
Weight(KG)		0.286

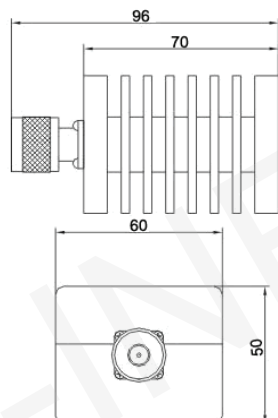
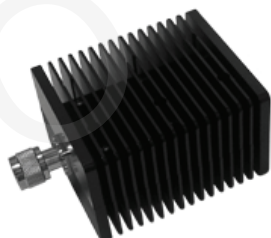
* Customization is available.



P/N		TCB50-20RN
Power(W)		20
Resistance(Ω)*		50
Frequency(GHz)*		DC-6
VSWR	DC-3GHz	1.15:1 max
	DC-6GHz	1.25:1 max
Connector*		N-M
Operation Temperature($^{\circ}$ C)		-55~+85
Size(mm)*		Φ 45×72
Weight(KG)		0.195

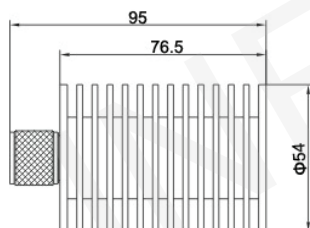
* Customization is available.

Coaxial



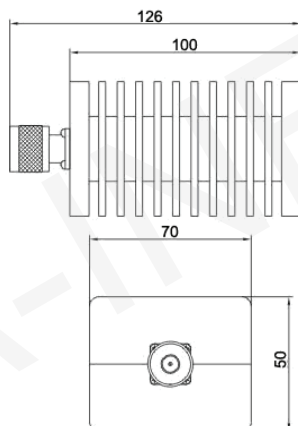
P/N		TCB50-20SN
Power(W)		20
Resistance(Ω)*		50
Frequency(GHz)*		DC-6
VSWR	DC-3GHz	1.15:1 max
	DC-6GHz	1.25:1 max
Connector*		N-M
Operation Temperature($^{\circ}$ C)		-55~+85
Size(mm)*		70×60×50
Weight(KG)		0.36

* Customization is available.



P/N		TCB50-30RN
Power(W)		30
Resistance(Ω)*		50
Frequency(GHz)*		DC-6
VSWR	DC-3GHz	1.15:1 max
	DC-6GHz	1.25:1 max
Connector*		N-M
Operation Temperature($^{\circ}$ C)		-55~+85
Size(mm)*		Φ 54×95
Weight(KG)		0.311

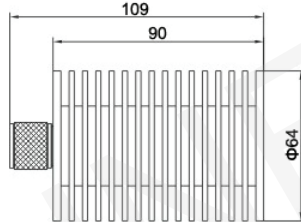
* Customization is available.



P/N		TCB50-30SN
Power(W)		30
Resistance(Ω)*		50
Frequency(GHz)*		DC-6
VSWR	DC-3GHz	1.20:1 max
	DC-6GHz	1.25:1 max
Connector*		N-M
Operation Temperature($^{\circ}$ C)		-55~+85
Size(mm)*		100×70×50
Weight(KG)		0.61

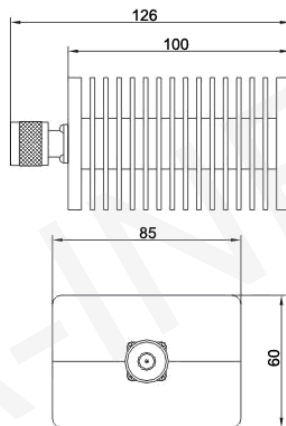
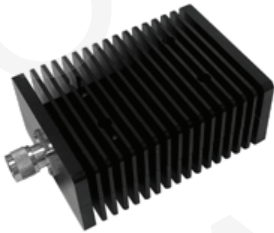
* Customization is available.

Coaxial



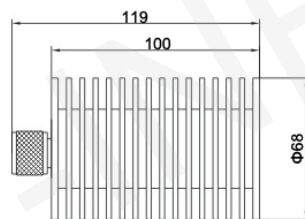
P/N		TCB50-50RN
Power(W)		50
Resistance(Ω)*		50
Frequency(GHz)*		DC-6
VSWR	DC-3GHz	1.20:1 max
	DC-6GHz	1.35:1 max
Connector*		N-M
Operation Temperature($^{\circ}$ C)		-55~+85
Size(mm)*		Φ 64×109
Weight(KG)		0.304

* Customization is available.



P/N		TCB50-50SN
Power(W)		50
Resistance(Ω)*		50
Frequency(GHz)*		DC-6
VSWR	DC-3GHz	1.20:1 max
	DC-6GHz	1.35:1 max
Connector*		N-M
Operation Temperature($^{\circ}$ C)		-55~+85
Size(mm)*		100×85×60
Weight(KG)		0.975

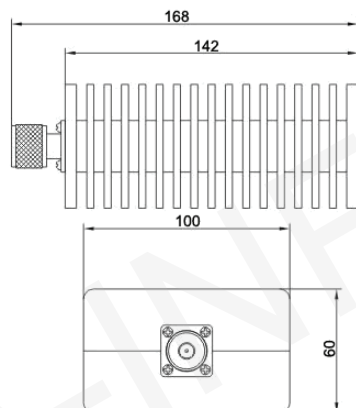
* Customization is available.



P/N		TCB50-80RN
Power(W)		80
Resistance(Ω)*		50
Frequency(GHz)*		DC-6
VSWR	DC-3GHz	1.20:1 max
	DC-6GHz	1.35:1 max
Connector*		N-M
Operation Temperature($^{\circ}$ C)		-55~+85
Size(mm)*		Φ 68×119
Weight(KG)		0.527

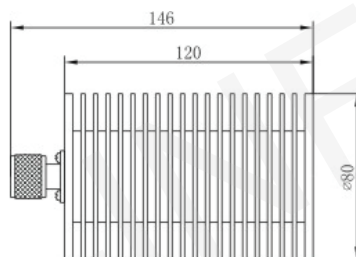
* Customization is available.

Coaxial



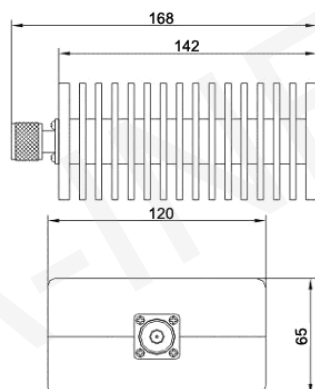
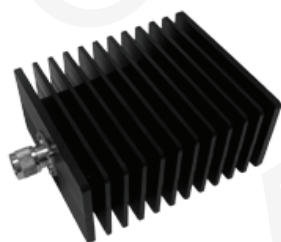
P/N		TCB50-80SN
Power(W)		80
Resistance(Ω)*		50
Frequency(GHz)*		DC-6
VSWR	DC-3GHz	1.20:1 max
	DC-6GHz	1.35:1 max
Connector*		N-M
Operation Temperature($^{\circ}$ C)		-55~+85
Size(mm)*		142×100×60
Weight(KG)		1.328

* Customization is available.



P/N		TCB50-100RN
Power(W)		100
Resistance(Ω)*		50
Frequency(GHz)*		DC-6
VSWR	DC-3GHz	1.20:1 max
	DC-6GHz	1.35:1 max
Connector*		N-M
Operation Temperature($^{\circ}$ C)		-55~+85
Size(mm)*		Φ 80×146
Weight(KG)		0.88

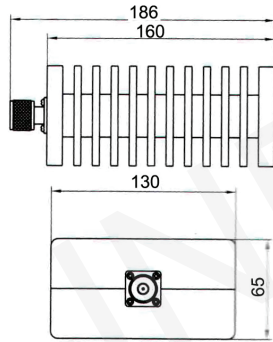
* Customization is available.



P/N		TCB50-100SN
Power(W)		100
Resistance(Ω)*		50
Frequency(GHz)*		DC-6
VSWR	DC-3GHz	1.20:1 max
	DC-6GHz	1.35:1 max
Connector*		N-M
Operation Temperature($^{\circ}$ C)		-55~+85
Size(mm)*		142×120×65
Weight(KG)		1.5

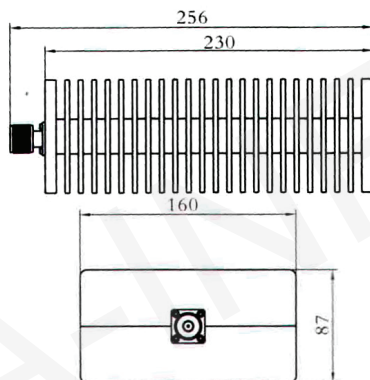
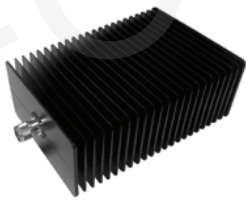
* Customization is available.

Coaxial



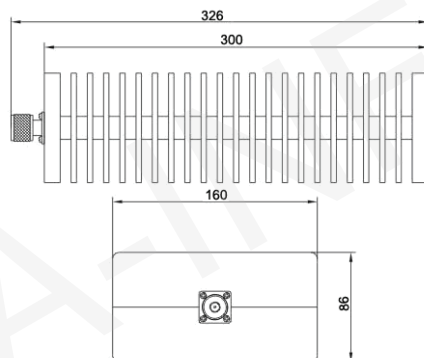
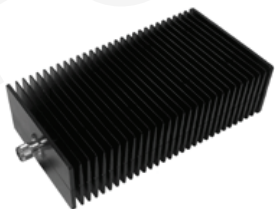
P/N		TCB50-150SN
Power(W)		150
Resistance(Ω)*		50
Frequency(GHz)*		DC-4
VSWR	DC-3GHz	1.20:1 max
	DC-4GHz	1.35:1 max
Connector*		N-M
Operation Temperature($^{\circ}$ C)		-55~+85
Size(mm)*		160×130×65
Weight(KG)		2.1

* Customization is available.



P/N		TCB50-200SN
Power(W)		200
Resistance(Ω)*		50
Frequency(GHz)*		DC-3
VSWR		1.20:1 max
Connector*		N-M
Operation Temperature($^{\circ}$ C)		-55~+85
Size(mm)*		230×160×87
Weight(KG)		4.2

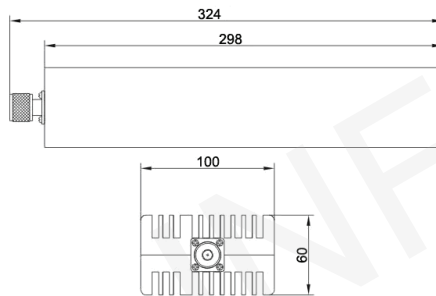
* Customization is available.



P/N		TCB50-300SN
Power(W)		300
Resistance(Ω)*		50
Frequency(GHz)*		DC-3
VSWR		1.20:1 max
Connector*		N-M
Operation Temperature($^{\circ}$ C)		-55~+85
Size(mm)*		300×160×86
Weight(KG)		5.1

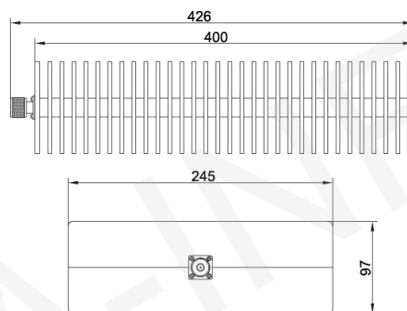
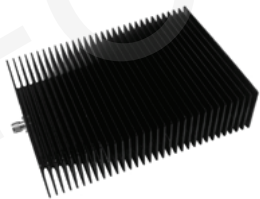
* Customization is available.

Coaxial



P/N	TCB50-300SNB
Power(W)	300
Resistance(Ω)*	50
Frequency(GHz)*	DC-3
VSWR	1.20:1 max
Connector*	N-M
Operation Temperature($^{\circ}$ C)	-55~+85
Size(mm)*	298×100×60
Weight(KG)	4.0

* Customization is available.



P/N	TCB50-500SN
Power(W)	500
Resistance(Ω)*	50
Frequency(GHz)*	DC-3
VSWR	1.25:1 max
Connector*	N-M
Operation Temperature($^{\circ}$ C)	-55~+85
Size(mm)*	400×245×97
Weight(KG)	7.5

* Customization is available.