



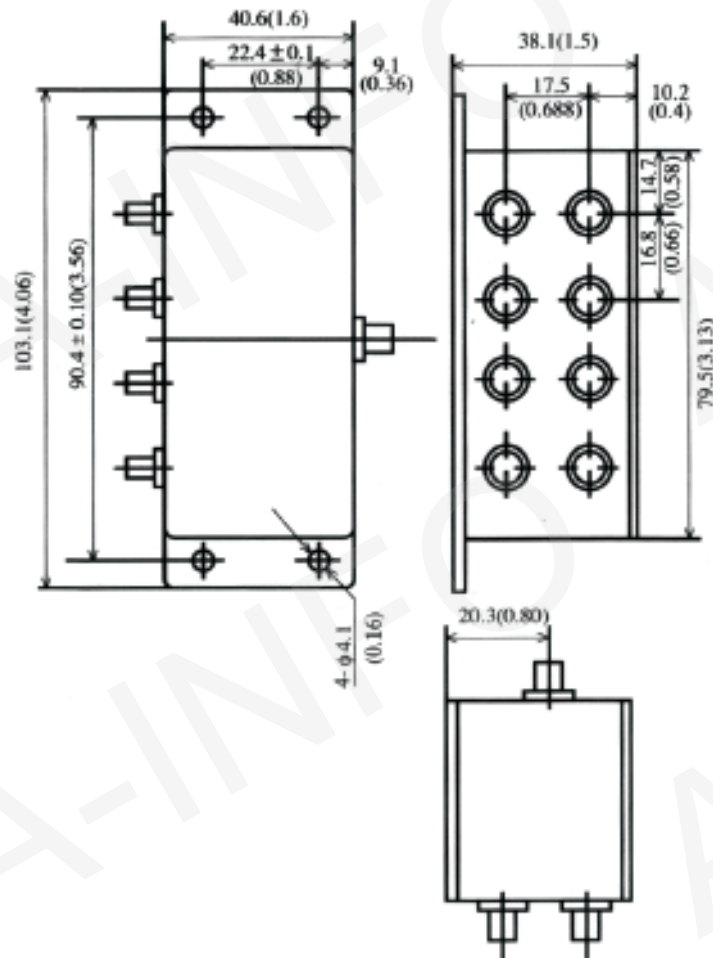
Test report is for reference only.

TEST REPORT
for
JXWBGF-T-8-5-500

Technical Specification

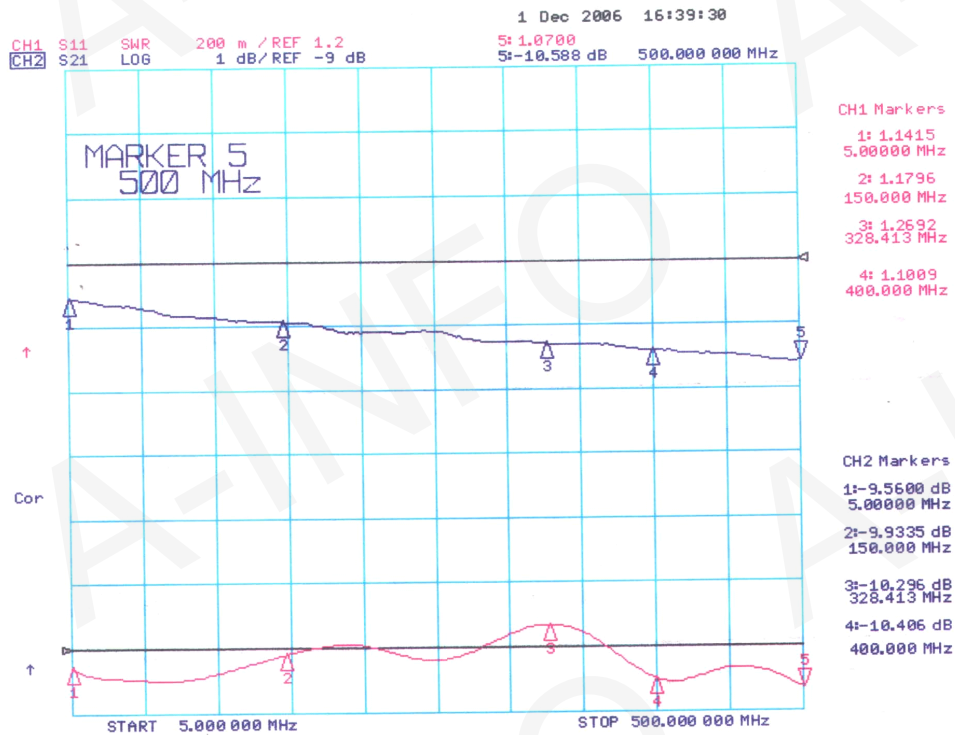
Frequency Range(MHz)	5-500
Insertion Loss(dB)	L: 0.8/1.2 Typ/Max
	M: 1.2/1.8 Typ/Max
	U: 1.8/2.0 Typ/Max
Isolation(dB)	L: 35/25 Typ/Min
	M: 30/25 Typ/Min
	U: 25/20 Typ/Min
Phase Unbalance(°)	8 max
Amplitude Unbalance(dB)	0.7 max
Connector	N-Female
Operating Temperature(°C)	-40 ~ +80
Storage Temperature(°C)	-55 ~ +85
Size(mm)	180x32x22

Outline Drawing (Size: mm)

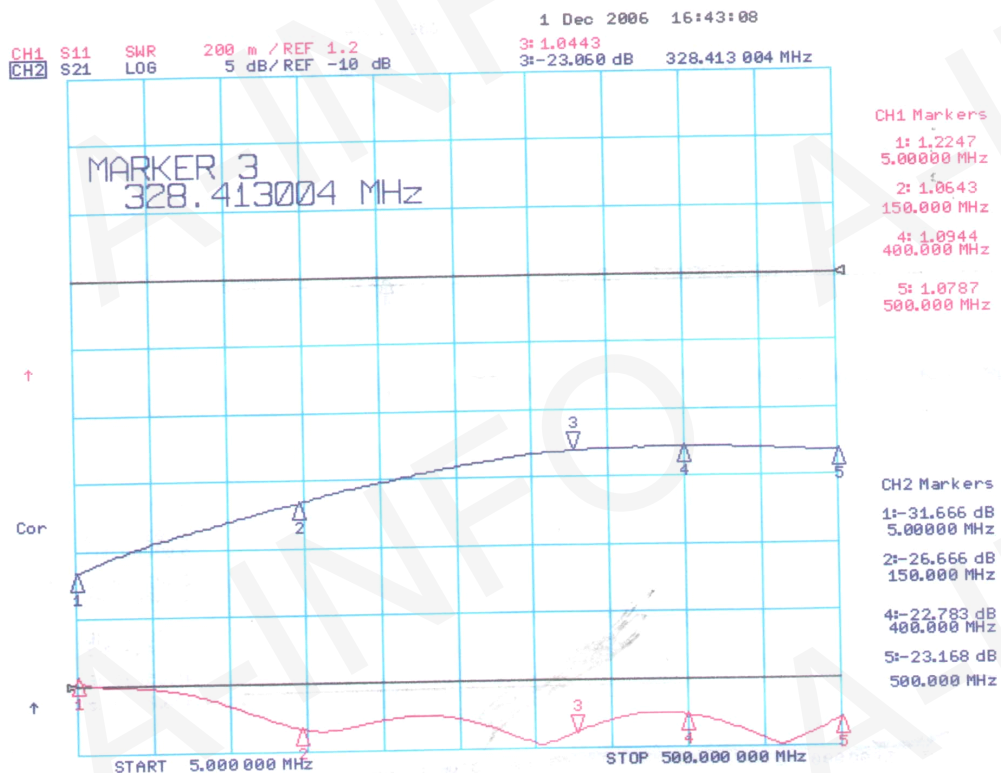


Test Results

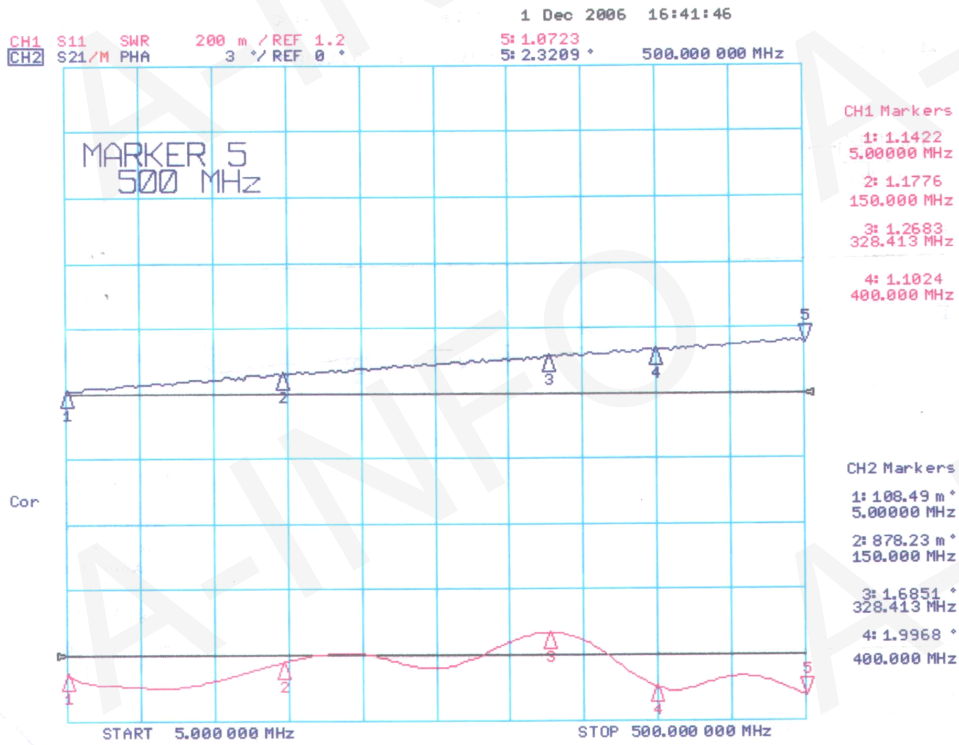
1. Insertion Loss



2. Isolation



3. Phase Unbalance



4. Amplitude Unbalance

