



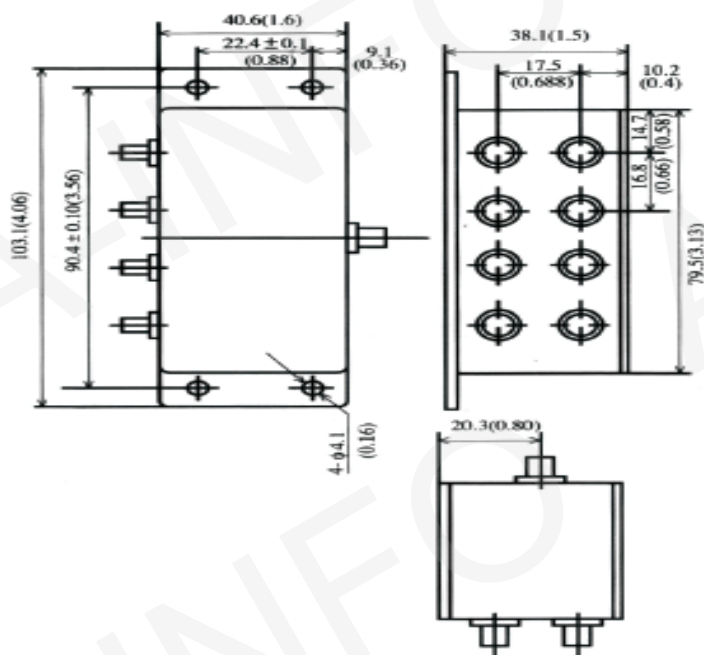
Test report is for reference only.

TEST REPORT
for
JXWBGF-T-8-0.5-175

Technical Specification

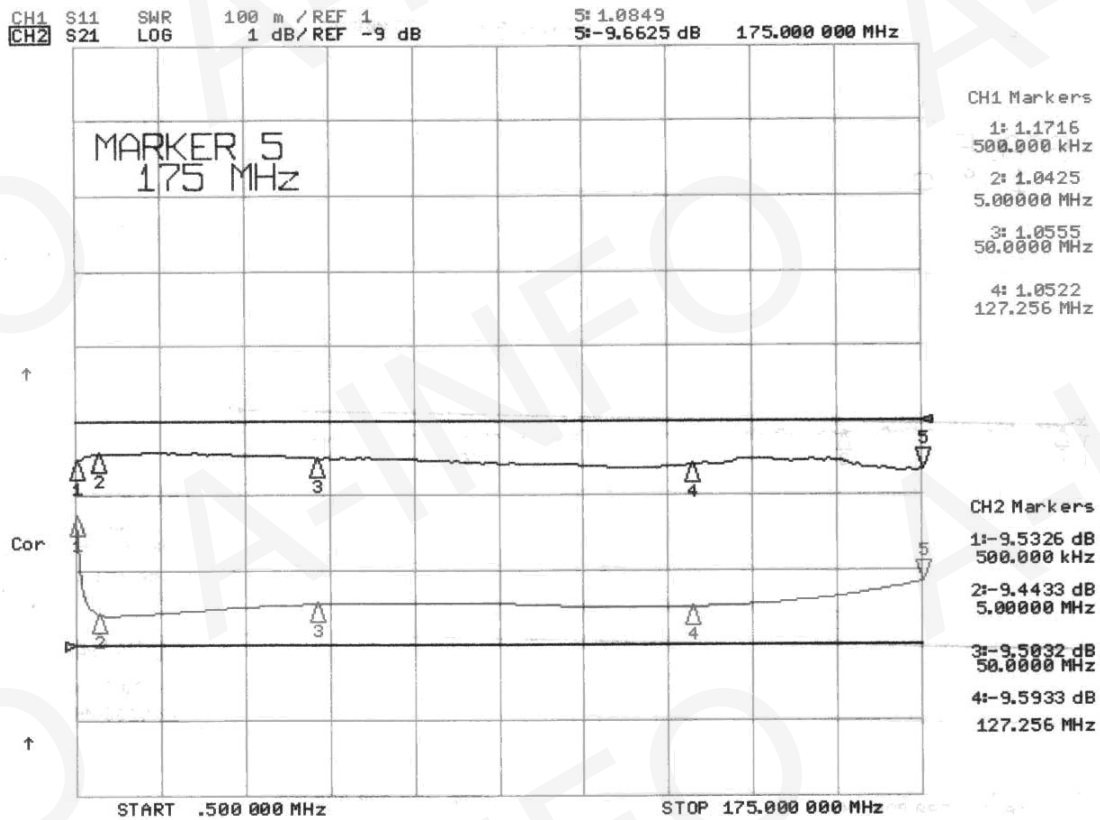
Frequency Range(MHz)	0.5-175
Insertion Loss(dB)	L: 0.8/1.2 Typ/Max
	M: 0.8/1.2 Typ/Max
	U: 1.0/1.6 Typ/Max
Isolation(dB)	L: 30/25 Typ/Min
	M: 30/20 Typ/Min
	U: 25/18 Typ/Min
Phase Unbalance(°)	5.0 max
Amplitude Unbalance(dB)	0.3 max
VSWR	1.3
Impedance(Ohm)	50
Connector	BNC
Operating Temperature(°C)	-40 ~ +80
Storage Temperature(°C)	-55 ~ +85

Outline Drawing (Size: mm)

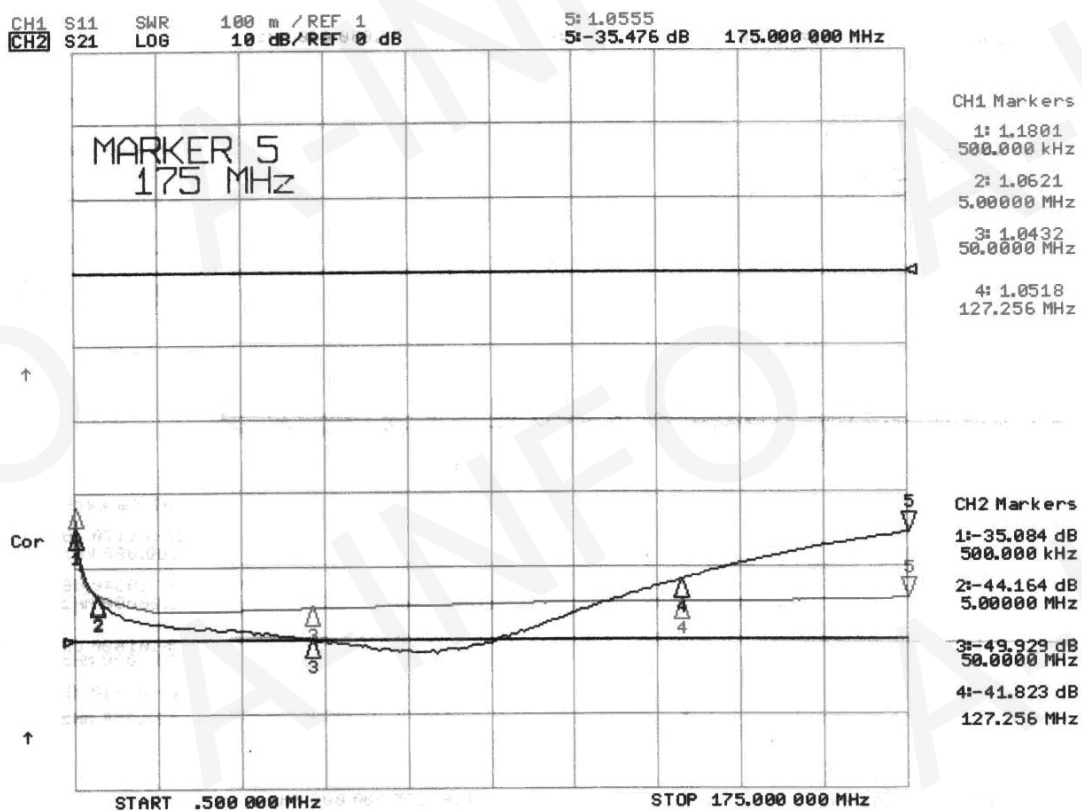


Test Results

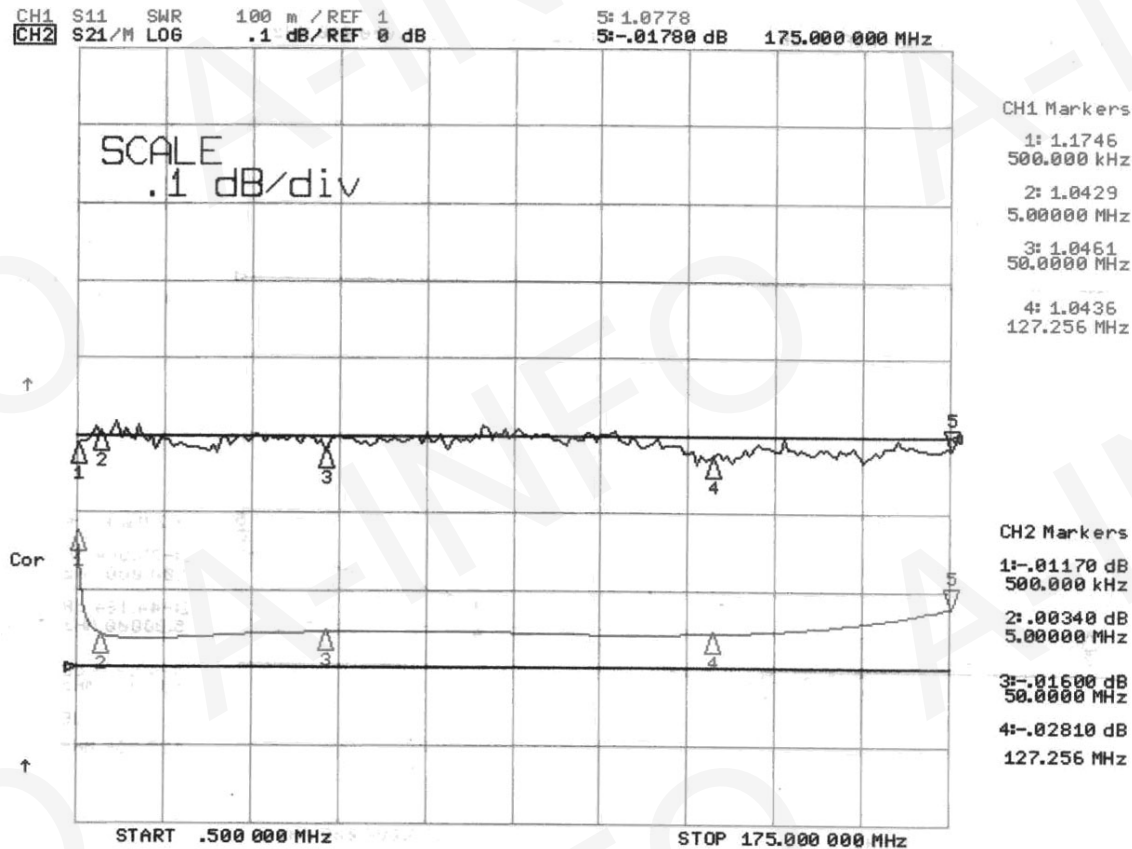
1. Insertion Loss



2. Isolation



3. Phase Unbalance



4. Amplitude Unbalance

