



Test report is for reference only.

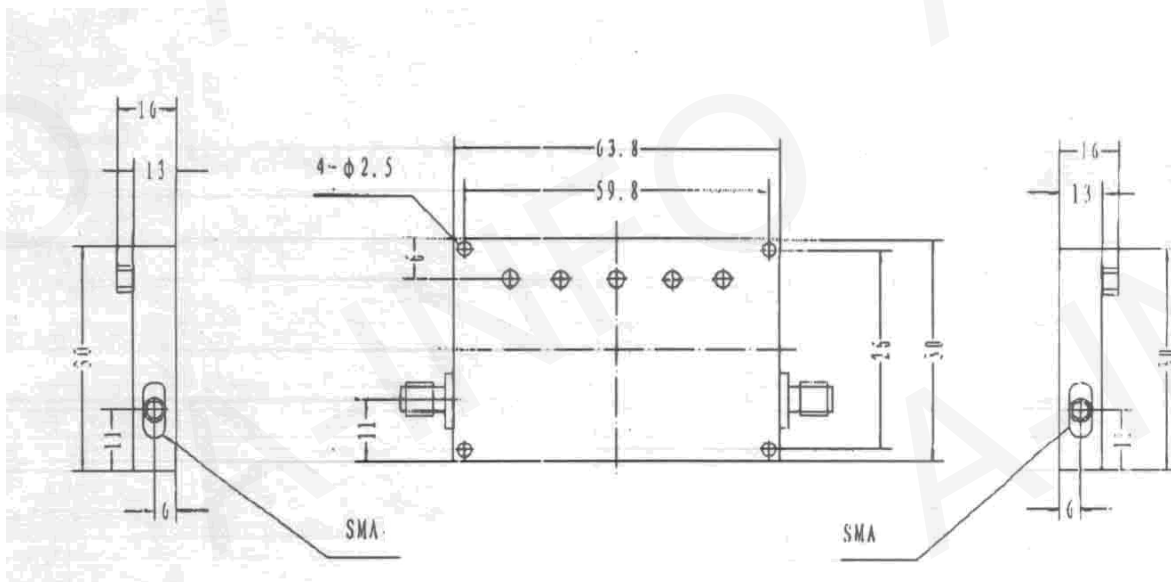
TEST REPORT
For
JXWBLB-T-BP-1800-40-5CS



Technical Specification

Frequency Range(MHz)	1780~1820
Insertion Loss(dB)	3 max (1780~1820MHz)
Rejection(dB)	50 min @0~1700MHz
	25 min @ 1700~1740MHz
	25 min @ 1860~1900MHz
	50 min @ >1900MHz
VSWR	1.5:1 max
Connector	SMA-Female
Size(mm)	63.8X30X16
Net Weight(Kg)	0.08

Outline Drawing (Size :mm)



Test Results

Insertion Loss (dB)		Rejection (dBc)				1dB Bandwidth (MHz)	VSWR
1780MHz	1820MHz	1740MHz	1860MHz	1700MHz	1900MHz		
-1.9	-1.7	37	36	56	59	50	1.23