



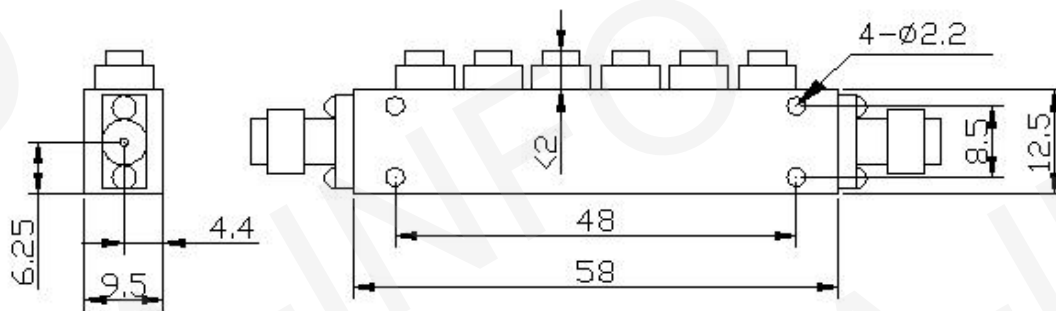
Test report is for reference only.

TEST REPORT
For
JXWBLB-T-12300-420/T-6CS

Technical Specification

Center Frequency(MHz)	12300
3dB Bandwidth(MHz)	420 min
Insertion Loss(dB)	1 max
Pole	6
Rejection (dB)	60 min@11100MHz
	60 min@13100MHz
VSWR	1.5 max(at 80% bandwidth)
Connector	SMA-Female
Size(mm)	58 x 12.5 x 9.5
Operating Temperature(°C)	-40 ~ +80
Net Weight(Kg)	0.05 Around

Outline Drawing (Size: mm)



Test Results

Temperature	f0 (MHz)	Insertion Loss(f0)	-3dB BW	Rejection(dB)		VSWR
				11.1GHz	13.1GHz	
Low	12305.47	-0.96	454.23	-85.7	-75.0	1.42
High	12295.05	-0.85	453.41	-86.5	-74.4	1.46
Normal	12300.97	-0.91	453.80	-86.6	-75.2	1.42