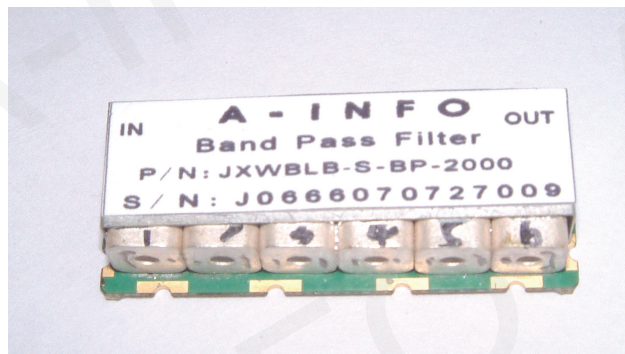




Test report is for reference only.

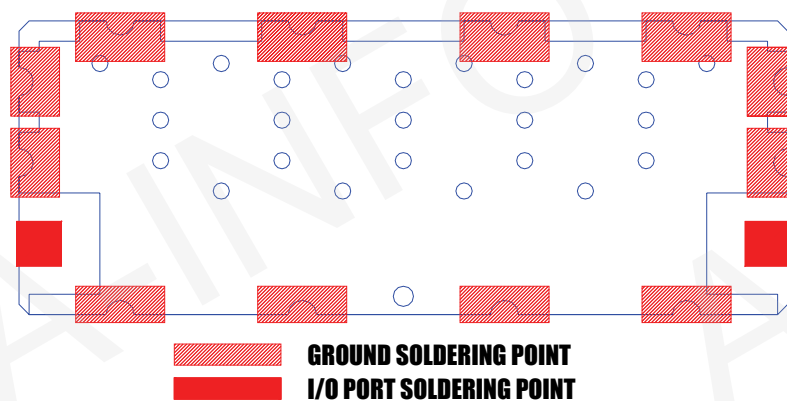
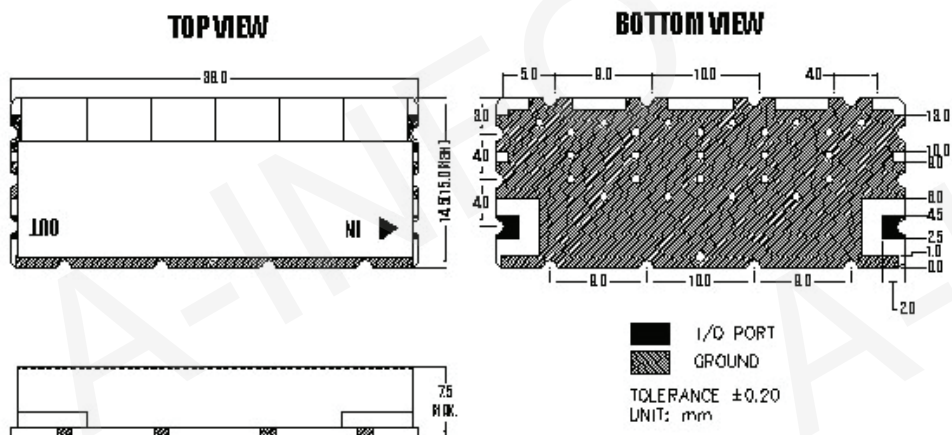
TEST REPORT
for
JXWBLB-S-BP-2000



Technical Specification

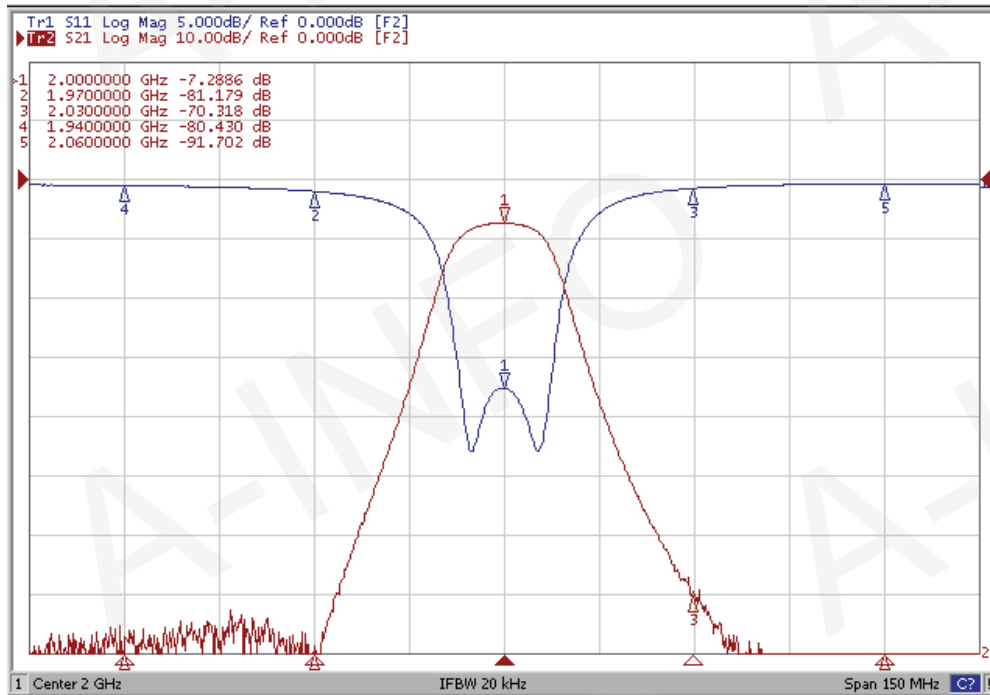
Center Frequency(MHz)	2000
I.L at Center Frequency(dB)	8.6 max
Bandwidth(MHz)	1995-2005
Ripple in BW (dB)	1.0 max
In/Out Impedance(Ω)	50
Attenuation(dBc) (Relative Value)	66.1 min @ 1970MHz
	64.3 min @2030MHz
	60 min @1940-1970MHz
	60 min @2030-2060MHz
VSWR	1.5 max
Operating Temperature($^{\circ}$ C)	-40 ~ +85
Net Weight(Kg)	0.01 Around

Outline Drawing



Test Results

Insertion Loss and Attenuation



VSWR and Insertion Loss

