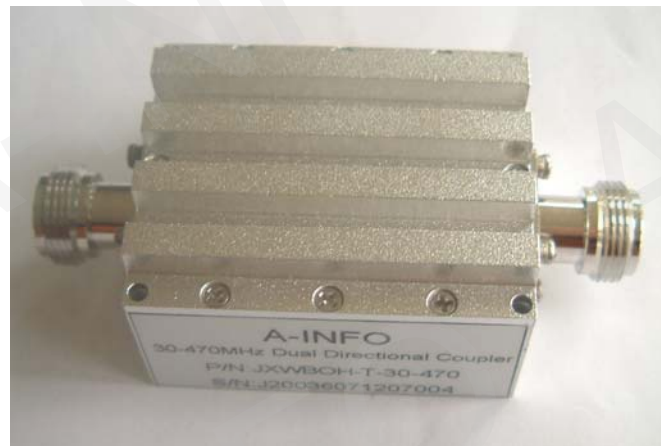




Test report is for reference only.

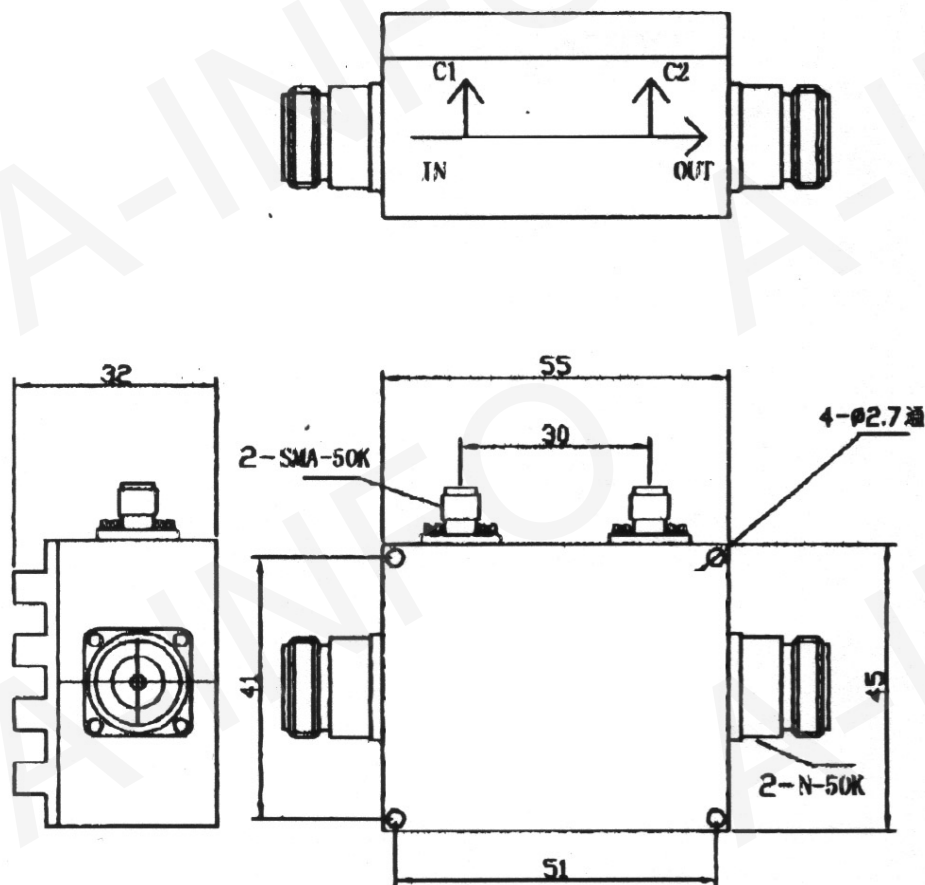
TEST REPORT
For
JXWBOH-T-30-470



Test Result Table

Item	Technical Specification	Test Result
Frequency Range(MHz)	30 ~470	30~470
Forward Coupling(dB)	10.5±1	10.80~11.16
Reverse Coupling(dB)	10.5±1	10.70~10.99
Directivity (Forward, C1 port) (dB)	15~20 typ. 13 min.	14.03 min
VSWR	1.8:1 max.	1.24 max
Insertion Loss(dB)	1.6max.	1.35 max
Power Handling(W)	200 CW max.	200CW max
Connectors	N-Female (Input/Output port) SMA-Female (Coupling port)	N-Female (Input/Output port) SMA-Female (Coupling port)
Operating Temperature(°C)	-40 ~ +85	-40 ~ +85
Tolerance(mm)	±0.1	±0.1
Net Weight(Kg)	-	0.195 Around

Outline Drawing (Size: mm)



Test Results

