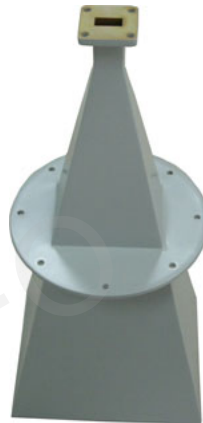


A Type



A Type with Mounting Ear



C Type

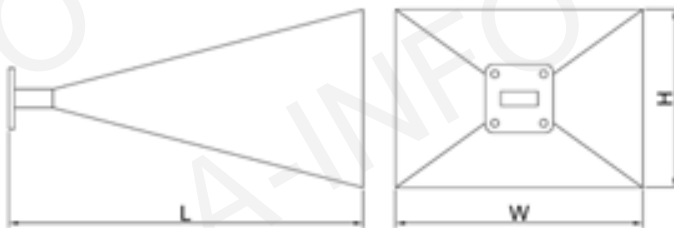


Technical Specification

Frequency Range(GHz)	10.0 - 15.0
Gain(dB)	25 Typ.
3dB Beamwidth(deg)	10 Typ.
Waveguide	WR75
Material	Al
Output	A Type: FBP120 / C Type: SMA-F or N-F
Size(mm) W x H x L	A Type: 185x155x400 / C Type: 185x155x430
Net Weight(Kg)	A Type: 0.6 Around / C Type: 0.65Around

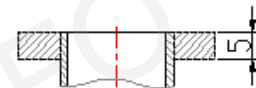
Outline Drawing (Size: mm)

A Type

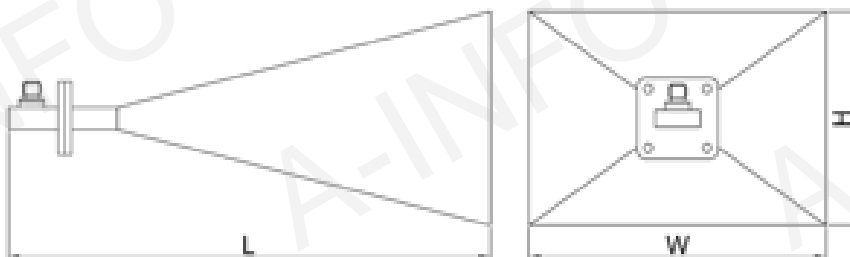


W x H x L: 185x155x400

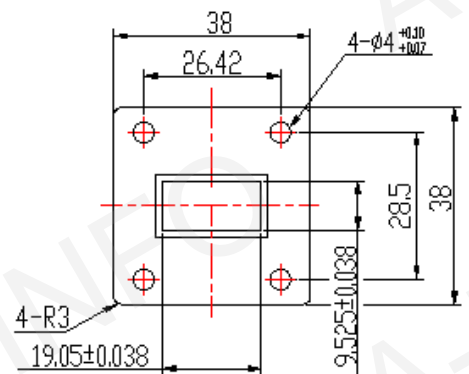
Flange Drawing



C Type



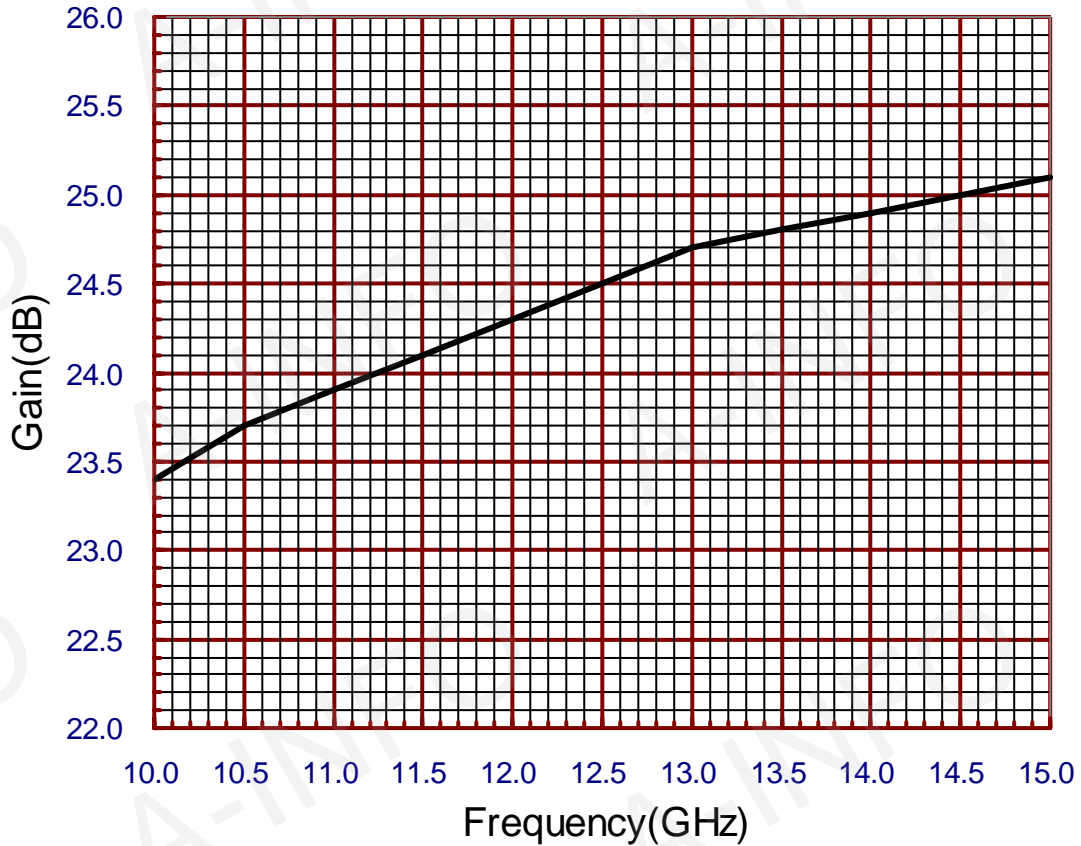
W x H x L: 185x155x430



FBP120

Test Results

Gain



Antenna Factor & Gain Table

Frequency (GHz)	Antenna Factor (dB/m)	Gain (dB)
10.0	26.81	23.4
10.5	26.93	23.7
11.0	27.14	23.9
11.5	27.32	24.1
12.0	27.49	24.3
12.5	27.65	24.5
13.0	27.79	24.7
13.5	28.02	24.8
14.0	28.23	24.9
14.5	28.44	25.0
15.0	28.63	25.1