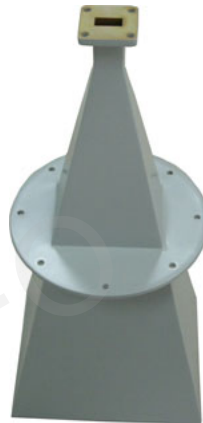


A Type



A Type with Mounting Ear



C Type

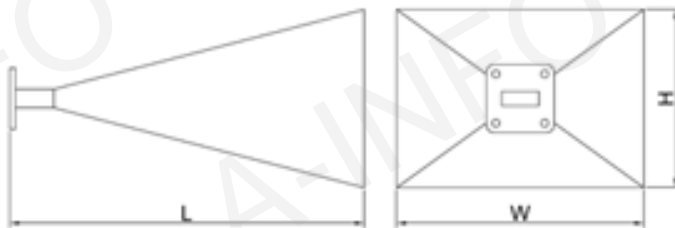


Technical Specification

| | |
|----------------------|---|
| Frequency Range(GHz) | 12.4 - 18.0 |
| Gain(dB) | 25 Typ. |
| 3dB Beamwidth(deg) | 10 Typ. |
| Waveguide | WR62 |
| Material | Al |
| Output | A Type: FBP140 / C Type: SMA-F or N-F |
| Size(mm) W x H x L | A Type: 155x128x356 / C Type: 155x128x383 |
| Net Weight(Kg) | A Type: 0.4 Around / C Type: 0.45Around |

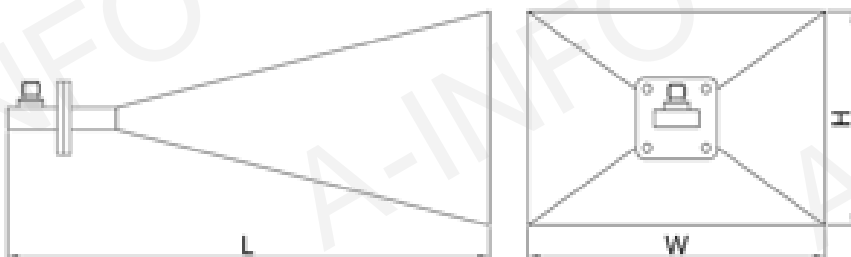
Outline Drawing (Size: mm)

A Type



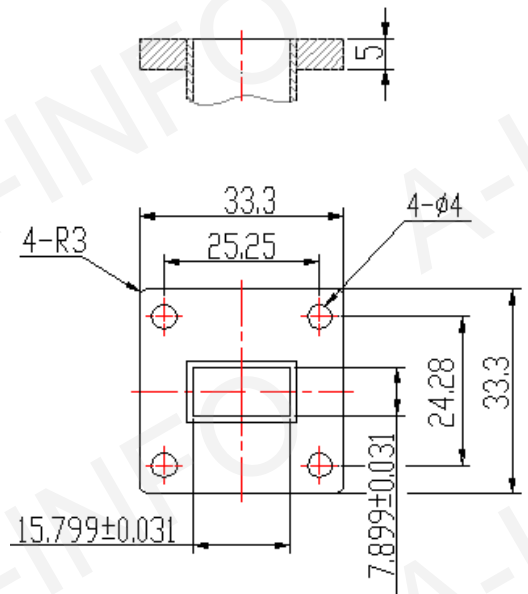
W x H x L: 155x128x356

C Type



W x H x L: 155x128x383

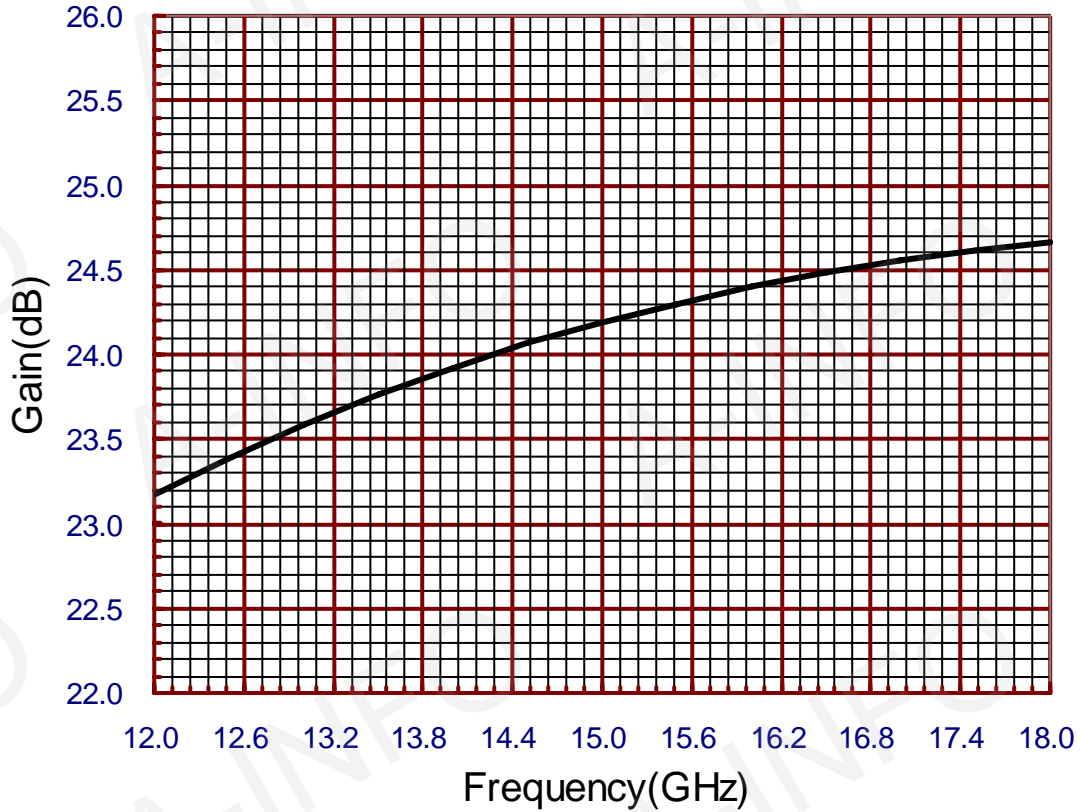
Flange Drawing



FBP140

Test Results

Gain



| | | | | | | | |
|---------|-------|-------|-------|-------|-------|-------|-------|
| F (GHz) | 11.9 | 12.0 | 12.5 | 13.0 | 13.5 | 14.0 | 14.5 |
| G (dB) | 23.12 | 23.17 | 23.39 | 23.58 | 23.76 | 23.92 | 24.07 |
| F (GHz) | 15.0 | 15.5 | 16.0 | 16.5 | 17.0 | 17.5 | 18.0 |
| G (dB) | 24.19 | 24.30 | 24.40 | 24.49 | 24.56 | 24.61 | 24.66 |