

The pictures are for reference only

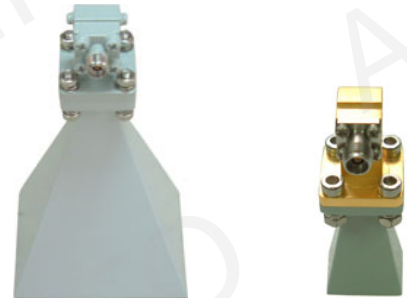
A Type



A2 Type
with Mounting Ear



C Type

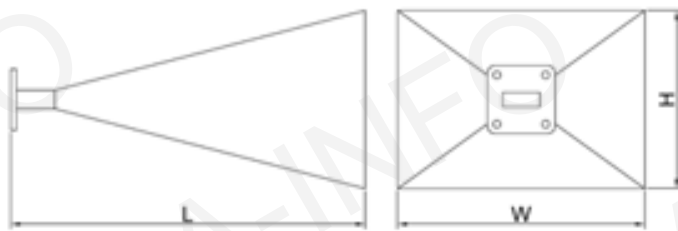


Technical Specification

Frequency Range(GHz)	26.5 - 40.0
Gain(dB)	25 Typ.
3dB Beamwidth(deg)	10 Typ.
Waveguide	WR28
Material	Cu
Output	A Type: FBP320 / C Type: 2.92mm-F or 2.4mm-F
Size(mm) W x H x L	A Type: 71x59x172 / C Type: 71x59x197
Net Weight(Kg)	A Type: 0.20 Around / C Type: 0.25 Around

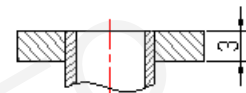
Outline Drawing (Size: mm)

A Type

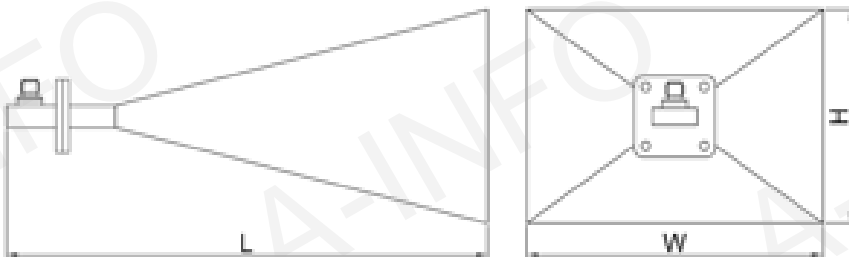


W x H x L: 71x59x172

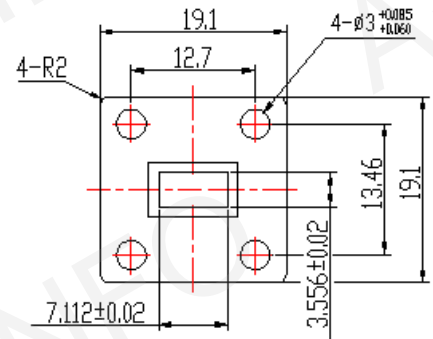
Flange Drawing



C Type



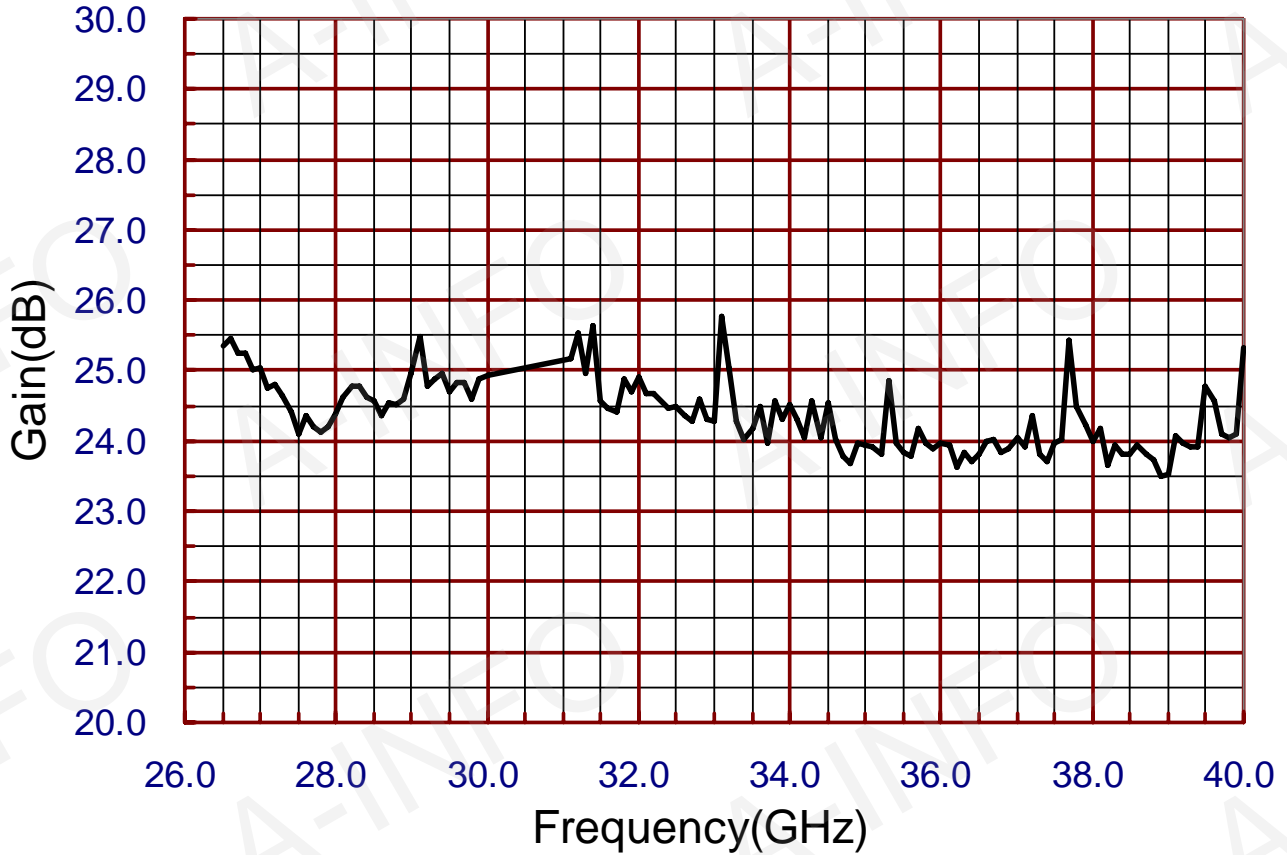
W x H x L: 71x59x197



FBP320

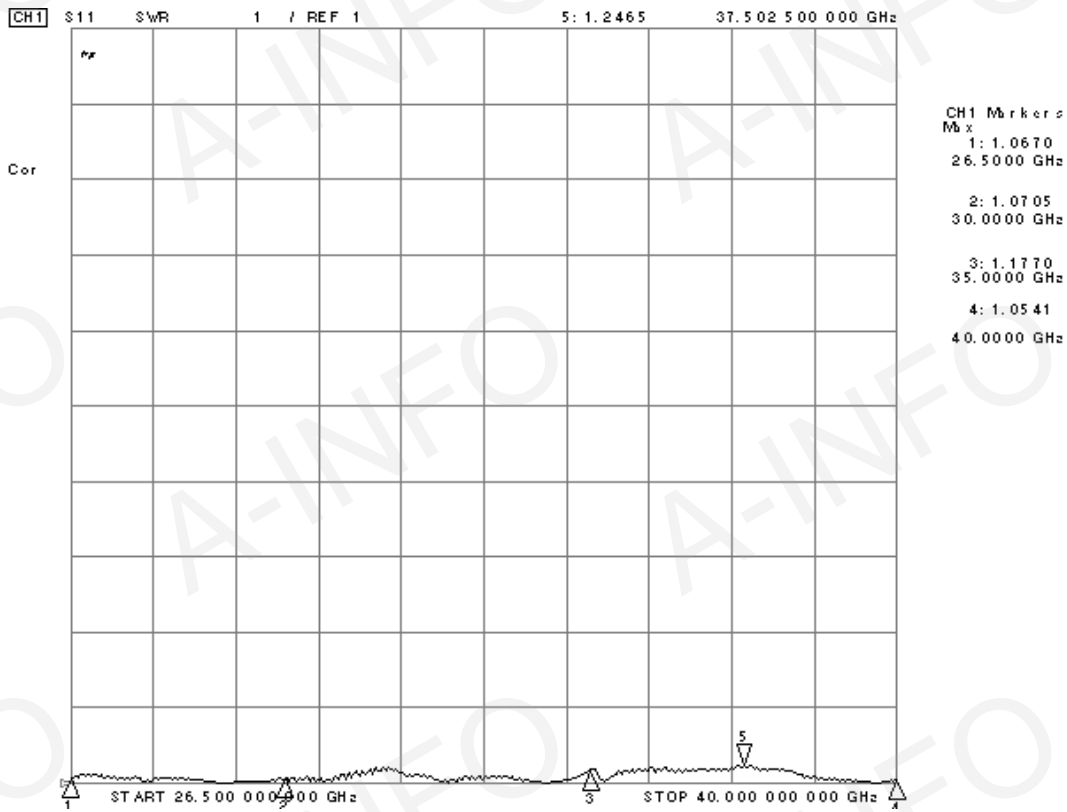
Test Results

1. Gain

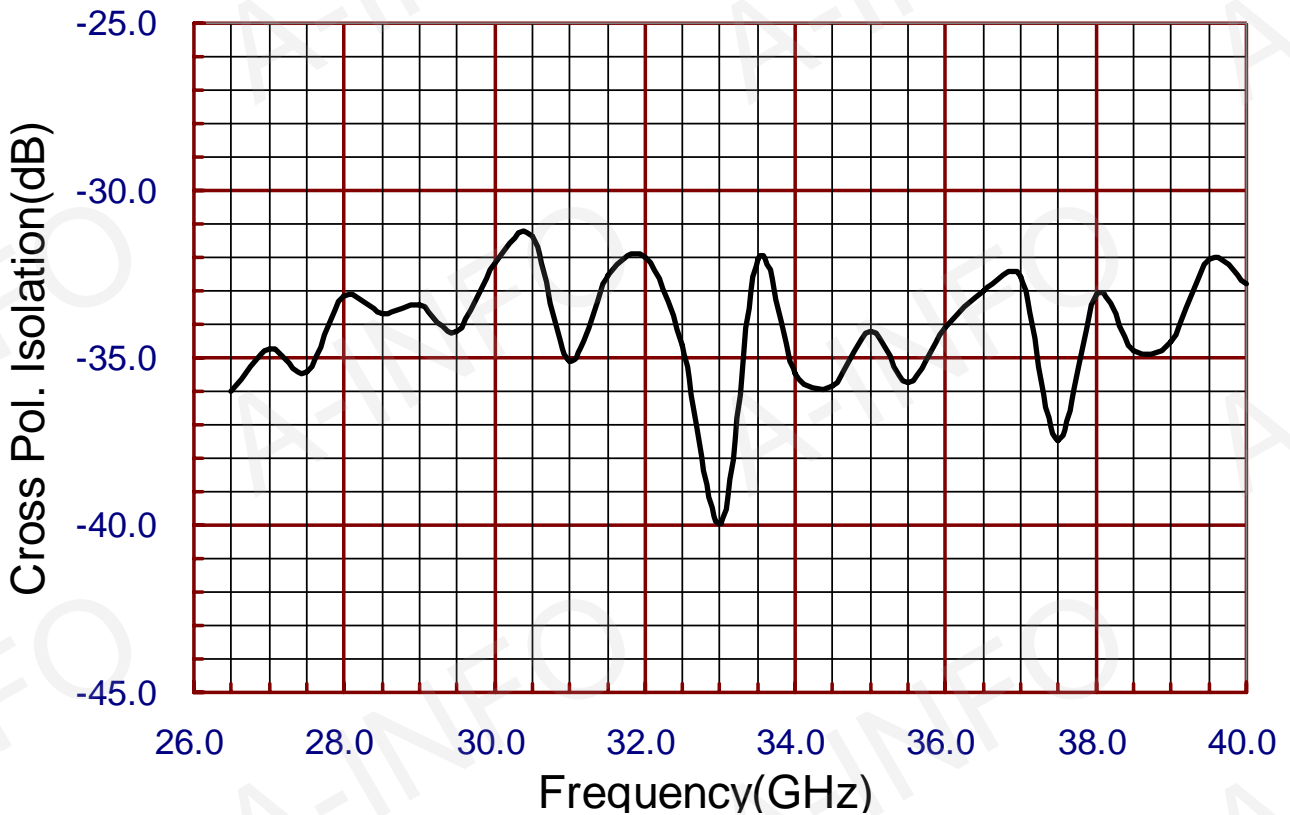


F(GHz)	26.5	27.0	27.5	28.0	28.5	29.0	29.5	30.0	30.5	31.0
G(dB)	25.35	25.04	24.10	24.39	24.56	24.95	24.69	24.93	24.89	25.02
F(GHz)	31.5	32.0	32.5	33.0	33.5	34.0	34.5	35.0	35.5	36.0
G(dB)	24.56	24.92	24.50	24.29	24.17	24.51	24.55	23.94	23.85	23.98
F(GHz)	36.5	37.0	37.5	38.0	38.5	39.0	39.5	40.0		
G(dB)	23.82	24.05	23.98	24.00	23.80	23.52	24.78	25.32		

2. VSWR



3. Cross Polarization Isolation



4. Pattern

