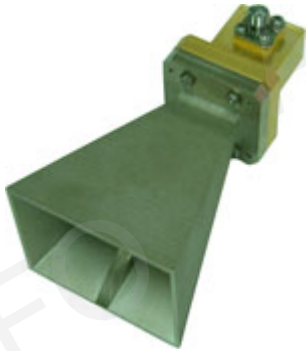
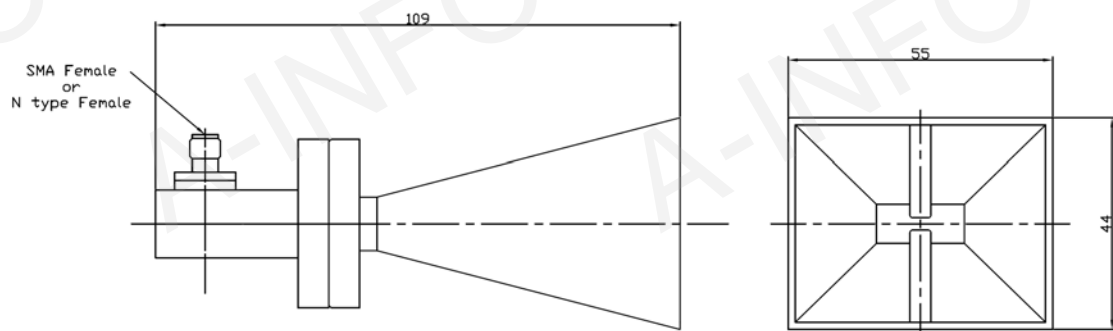


Technical Specification

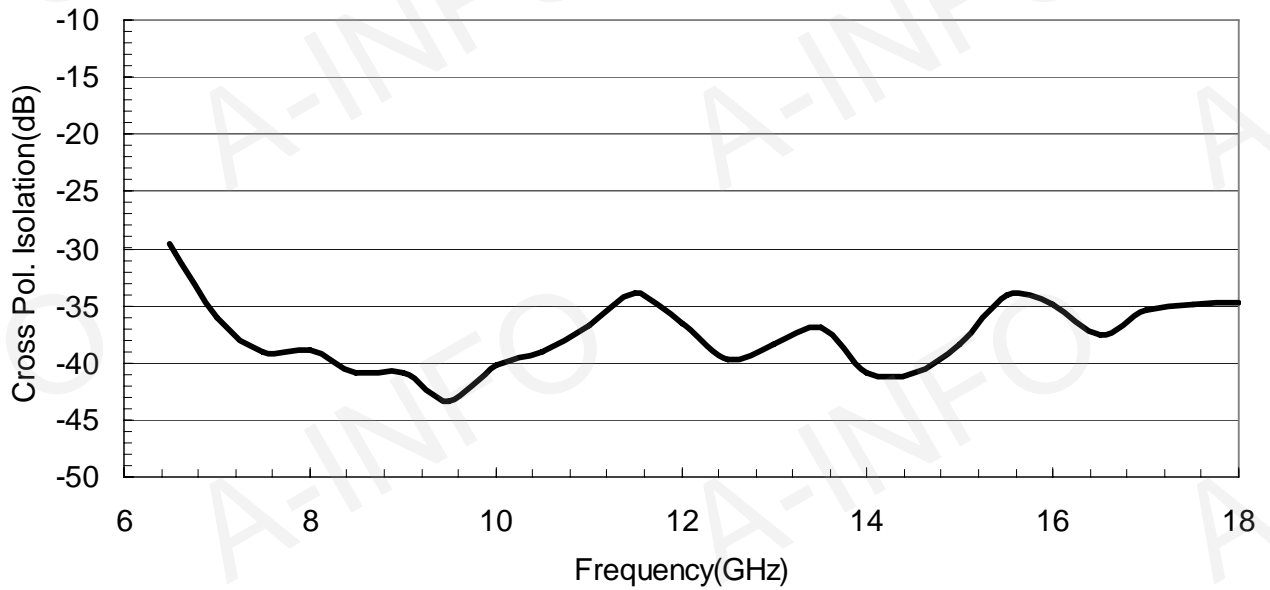


Frequency Range (GHz)	6.5 - 18.0
Gain(dBi)	10 Typ.
Polarization	Linear
VSWR	2.0 Max
Cross Polarization Isolation(dB)	-25 Max
Waveguide(A Type)	WRD650D28
Adapter(C Type)	SMA-F or N-F
Connector(C Type)	650DRWCAS or 650DRWCAN
Size	55x44x109 (Including Adapter)
Net Weight(Kg)	0.19 Around (Including Adapter)

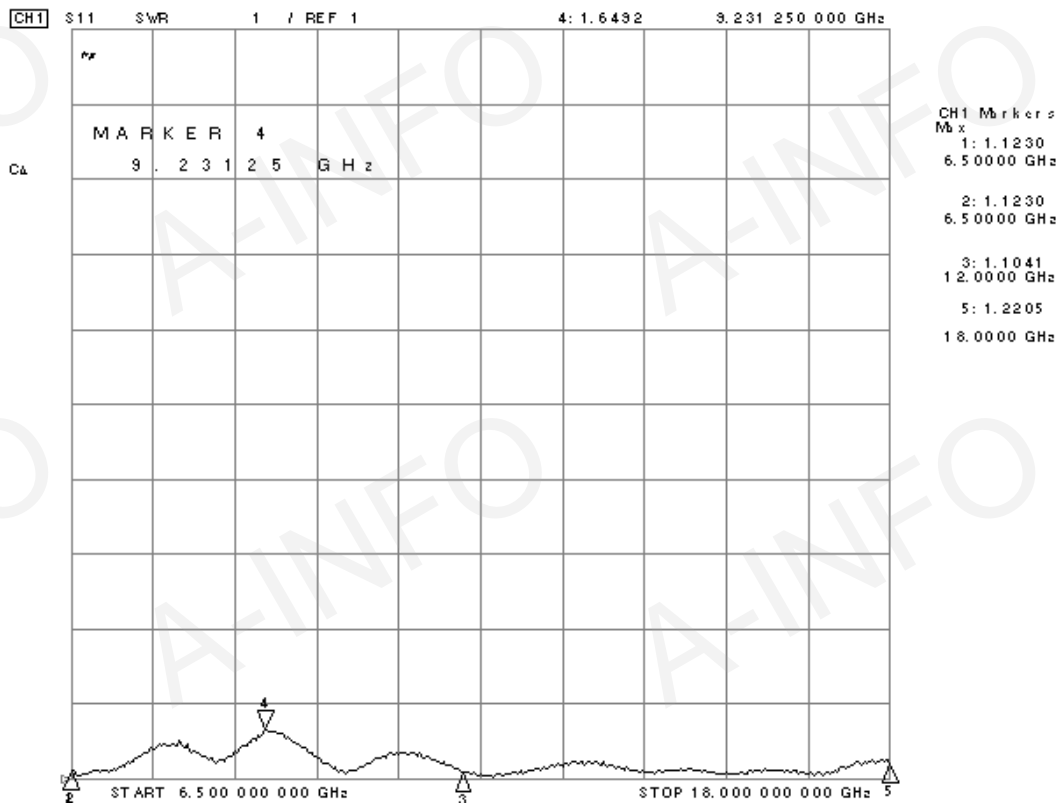
Outline Drawing (Size: mm) Including Adapter



2. Cross Polarization Isolation

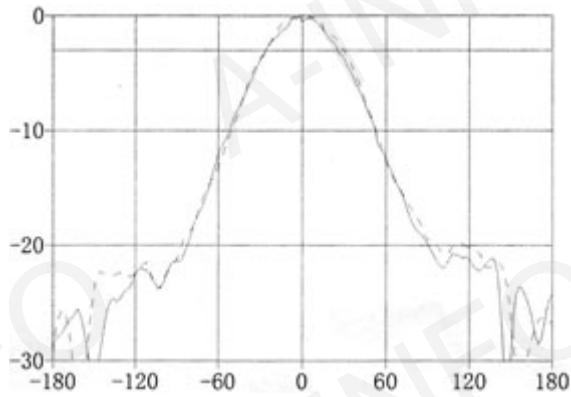


3. VSWR



4. Pattern

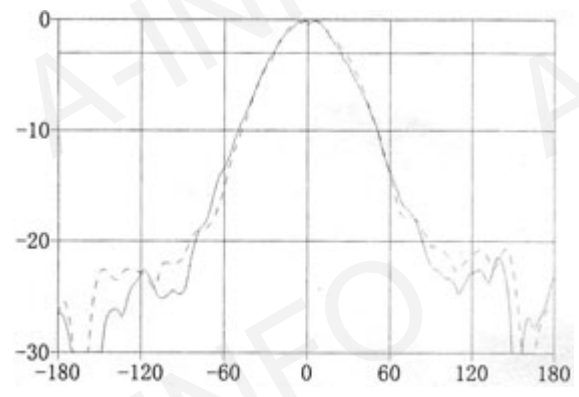
6.5GHz



H-Plane — E-Plane - - - -

3dB Beamwidth (deg): 51.20 3dB Beamwidth (deg): 55.41

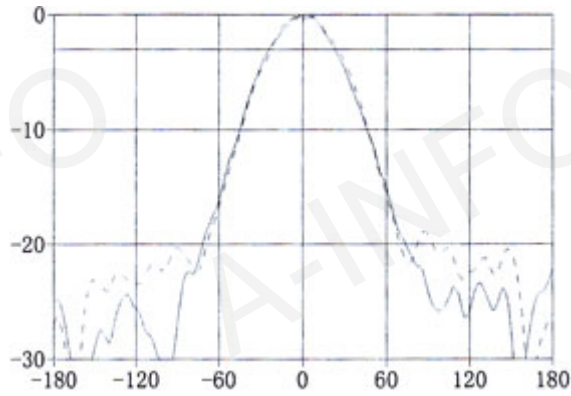
7.0GHz



H-Plane — E-Plane - - - -

3dB Beamwidth (deg): 49.24 3dB Beamwidth (deg): 51.21

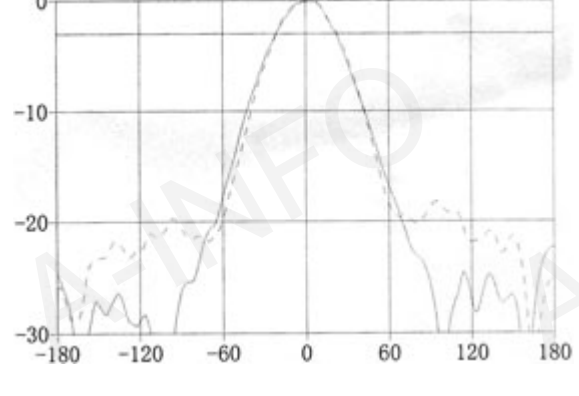
7.5GHz



H-Plane — E-Plane - - - -

3dB Beamwidth (deg): 47.03 3dB Beamwidth (deg): 48.13

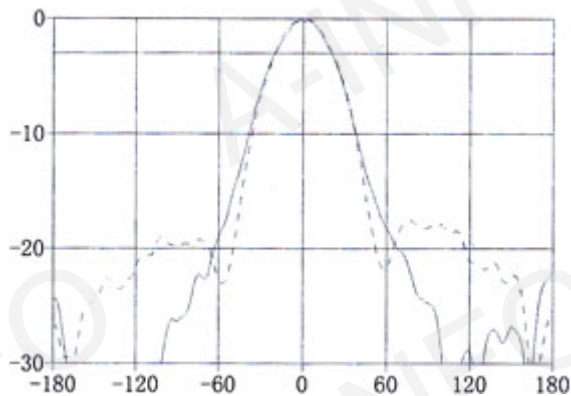
8.0GHz



H-Plane — E-Plane - - - -

3dB Beamwidth (deg): 43.41 3dB Beamwidth (deg): 44.15

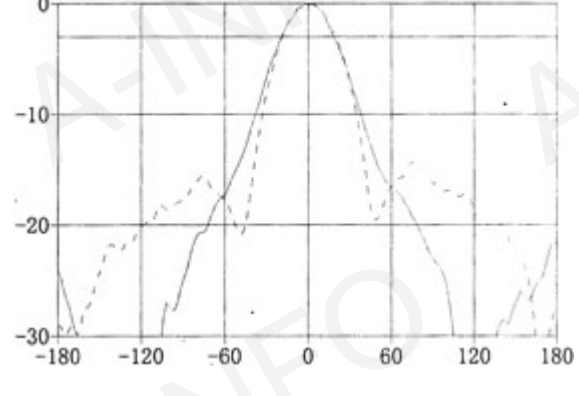
8.5GHz



H-Plane — E-Plane - - - -

3dB Beamwidth (deg): 40.45 3dB Beamwidth (deg): 41.11

9.0GHz



H-Plane — E-Plane - - - -

3dB Beamwidth (deg): 37.47 3dB Beamwidth (deg): 38.51

