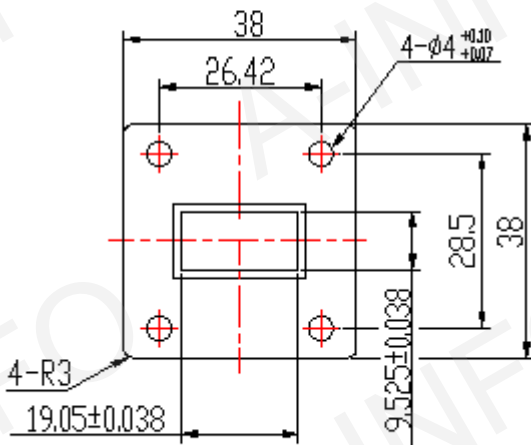
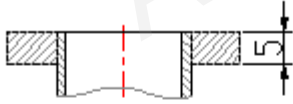


Outline Drawing(Size: mm)

Flange Drawing

Adapter



FBP120



Test Result Table

Item	Technical Specification	Test Result
Freq. Range(GHz)	10.0-15.0	10.0-15.0
Waveguide	WR75	WR75
VSWR	1.25 max	1.23 max
Flange	FBP120	FBP120
Connector	TNC-Female	TNC-Female
Material	Al	Al
Net Weight(Kg)	-	0.04 Around