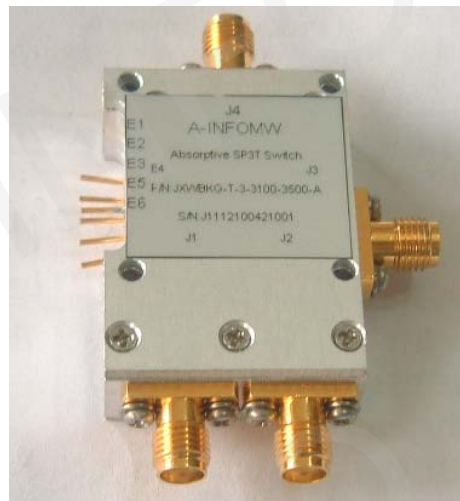




Test report is for reference only.

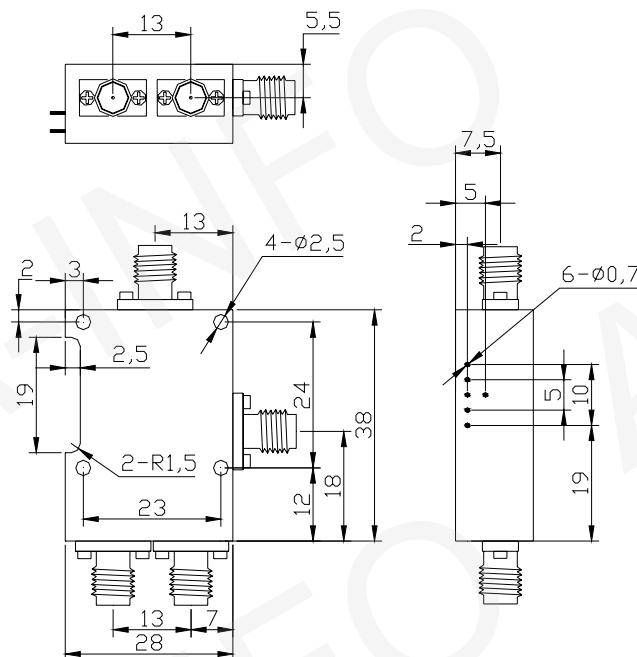
TEST REPORT
For
JXWBKG-T-3-3100-3500-A



Technical Specification

Frequency Range(GHz)	3.1 – 3.5
Insertion Loss(dB)	1.3+/-0.4 max @ 3.3GHz
Flatness @ 3.1-3.5GHz(dB)	+/-0.25 max
Isolation(dB)	100 min
VSWR	1.4:1 max
Power(W)	0.2
Switching Speed(ns)	250 max
Settling Time(ns)	150 max
Power Supply(V@ mA)	+/-5 @ 200 max
Connectors	SMA -Female
Operating Temperature(°C)	-40 ~ +70
Storage Temperature(°C)	-55 ~ +85
Net Weight(Kg)	0.035 Around

Outline Drawing (Size:mm)



Test Results

Port	Insertion Loss(dB)	VSWR	Isolation(dB)
J1→J4	1.49	1.27	100 min
J2→J4	1.44	1.24	100 min
J3→J4	1.50	1.20	100 min