



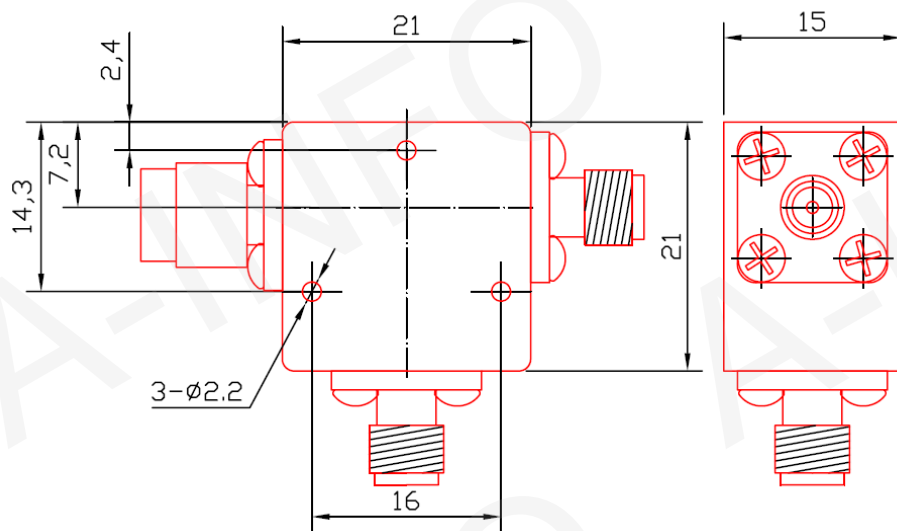
Test report is for reference only.

TEST REPORT
For
JXWBHX-T-2450-25-100_SMF

Technical Specification

Frequency(MHz)	2450
Insertion Loss(dB)	0.4 max
VSWR	1.15 max
Isolation(dB)	25 min
Power Handling(W)	100
Connector	Port 1: SMA-Male Port 2: SMA-Female Port 3: SMA-Female
Temperature Range(°C)	-40 ~ +70
Net Weight(Kg)	0.045 Around

Outline Drawing (Size: mm)



Test Results

Insertion Loss(dB)	Isolation(dB)	VSWR
0.35	25	1.10