



Test report is for reference only.

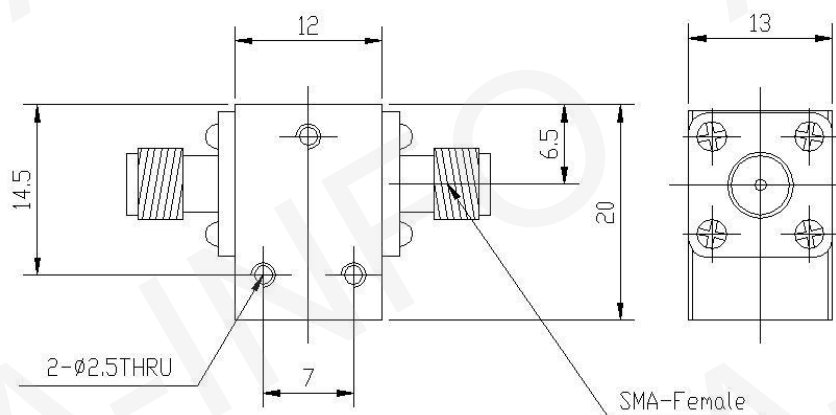
TEST REPORT
For
JXWBGL-T-10000-15000-18-20



Technical Specification

Frequency Range(GHz)	10 – 15
Insertion Loss(dB)	0.6 max
Isolation(dB)	18 min
VSWR	1.3 max
Forward Power(W)	20
Reverse Power(W)	10
Connector	SMA-Female
Operating Temperature(°C)	-40 ~ +85
Net Weight(Kg)	0.015

Outline Drawing (Size: mm)



Test Results

Frequency(GHz)	Insertion Loss(dB)	Isolation(dB)	VSWR
10.0-15.0	0.44	20.24	1.26