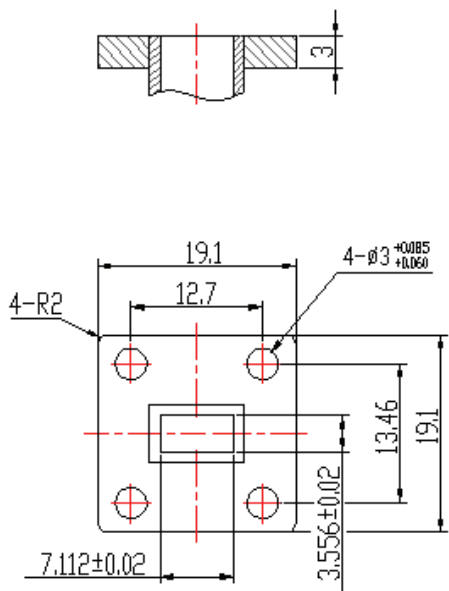


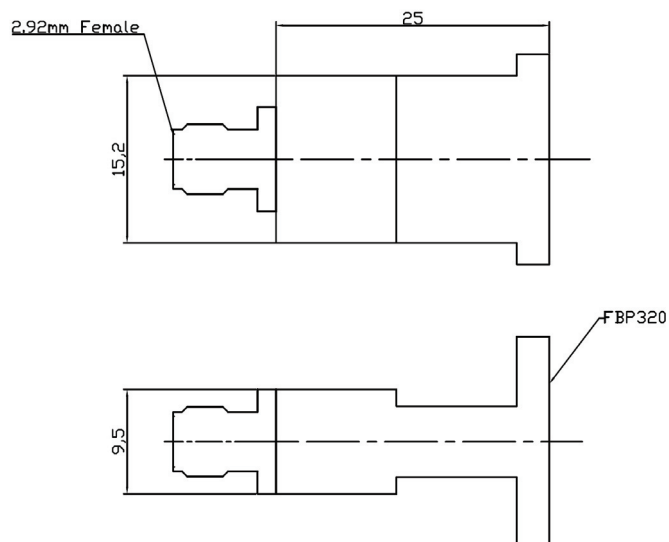
Outline Drawing(Size: mm)

Flange Drawing



FBP320

Adapter



Test Result Table

Item	Technical Specification	Test Result
Freq. Range(GHz)	26.5-40.0	26.5-40.0
Waveguide	WR28	WR28
VSWR	1.60	1.54
Flange	FBP320	FBP320
Connector	2.92mm-Female	2.92mm-Female
Material	Cu	Cu
Net Weight(Kg)	-	0.03 Around