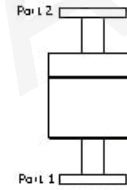


### Waveguide Single Joint (I Type)



Standard Models									
P/N	Frequency Range (GHz)	Waveguide	Band Width (MHz)	VSWR	Insertion Loss (dB)	Average Power (W)	Peak Power (KW)	Flange	Material
284WRJI	2.60-3.95	WR284	200	1.20	0.3	600	600	FDP32/ FDM32	Al/Cu
229WRJI	3.30-4.90	WR229	200	1.20	0.3	600	600	FDP40/ FDM40	Al/Cu
187WRJI	3.95-5.85	WR187	200	1.20	0.3	600	600	FDP48/ FDM48	Al/Cu
159WRJI	4.90-7.05	WR159	300	1.25	0.3	500	150	FDP58/ FDM58	Al/Cu
137WRJI	5.85-8.20	WR137	300	1.25	0.3	500	150	FDP70/ FDM70	Al/Cu
112WRJI	7.05-10.0	WR112	300	1.25	0.3	400	150	FBP84/ FBM84/ FBE84	Al/Cu
90WRJI	8.20-12.4	WR90	300	1.25	0.3	400	150	FBP100/ FBM100/ FBE100	Al/Cu
75WRJI	10.0-15.0	WR75	500	1.25	0.3	200	10	FBP120/ FBM120/ FBE120	Al/Cu
62WRJI	12.4-18.0	WR62	1000	1.30	0.4	100	4	FBP140/ FBM140/ FBE140	Al/Cu
51WRJI	15.0-22.0	WR51	1000	1.30	0.4	100	3	FBP180/ FBM180/ FBE180	Al/Cu
42WRJI	18.0-26.5	WR42	2000	1.40	1.0	50	0.5	FBP220/ FBM220/ FBE220	Al/Cu
34WRJI	22.0-33.0	WR34	2000	1.40	1.0	30	0.3	FBP260/ FBM260/ FBE260	Al/Cu
28WRJI	26.5-40.0	WR28	2000	1.40	1.0	30	0.3	FBP320/ FBM320/ FBE320	Al/Cu

#### Ordering Information

P/N:

**28**  
WR Size

**WRJI**  
Product Code

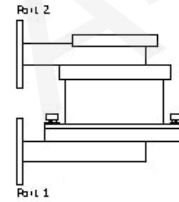
AINFO manufactures wide variety of waveguide single joint assemblies specially designed for every customers unique requirements. Waveguide Single Joint can be assembled with many types of flange. We also offer many other special configurations, length and hole size to meet special requirements.

**Example:** 28WRJI is a I type WR28 waveguide single joint.

Note:

1. Customization is available;
2. For detailed information of each I type waveguide single joint, please visit the website: [www.ainfoinc.com](http://www.ainfoinc.com).
3. Waveguide Dual-way Joint & Waveguide Three-way Joint also can be provided, for detailed information, pls. contact us.

### Waveguide Single Joint (U Type)



Standard Models									
P/N	Frequency Range (GHz)	Waveguide	Band Width (MHz)	VSWR	Insertion Loss (dB)	Average Power (W)	Peak Power (KW)	Flange	Material
284WRJU	2.60-3.95	WR284	200	1.20	0.3	600	600	FDP32/ FDM32	Al/Cu
229WRJU	3.30-4.90	WR229	200	1.20	0.3	600	600	FDP40/ FDM40	Al/Cu
187WRJU	3.95-5.85	WR187	200	1.20	0.3	600	600	FDP48/ FDM48	Al/Cu
159WRJU	4.90-7.05	WR159	300	1.25	0.3	500	150	FDP58/ FDM58	Al/Cu
137WRJU	5.85-8.20	WR137	300	1.25	0.3	500	150	FDP70/ FDM70	Al/Cu
112WRJU	7.05-10.0	WR112	300	1.25	0.3	400	150	FBP84/ FBM84/ FBE84	Al/Cu
90WRJU	8.20-12.4	WR90	300	1.25	0.3	400	150	FBP100/ FBM100/ FBE100	Al/Cu
75WRJU	10.0-15.0	WR75	500	1.25	0.3	200	10	FBP120/ FBM120/ FBE120	Al/Cu
62WRJU	12.4-18.0	WR62	1000	1.30	0.4	100	4	FBP140/ FBM140/ FBE140	Al/Cu
51WRJU	15.0-22.0	WR51	1000	1.30	0.4	100	3	FBP180/ FBM180/ FBE180	Al/Cu
42WRJU	18.0-26.5	WR42	2000	1.40	1.0	50	0.5	FBP220/ FBM220/ FBE220	Al/Cu
34WRJU	22.0-33.0	WR34	2000	1.40	1.0	30	0.3	FBP260/ FBM260/ FBE260	Al/Cu
28WRJU	26.5-40.0	WR28	2000	1.40	1.0	30	0.3	FBP320/ FBM320/ FBE320	Al/Cu

#### Ordering Information

P/N:

**34**                      **WRJU**  
WR Size                      Product Code

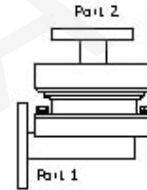
**Example:** 34WRJU is a U type WR34 waveguide single joint.

AINFO manufactures wide variety of waveguide single joint assemblies specially designed for every customers unique requirements. Waveguide Single Joint can be assembled with many types of flange. We also offer many other special configurations, length and hole size to meet special requirements.

Note:

1. Customization is available;
2. For detailed information of each U type waveguide single joint, please visit the website: [www.ainfoinc.com](http://www.ainfoinc.com).
3. Waveguide Dual-way Joint & Waveguide Three-way Joint also can be provide, for detailed information, pls. contact us.

### Waveguide Single Joint (L Type)



Standard Models									
P/N	Frequency Range (GHz)	Waveguide	Band Width (MHz)	VSWR	Insertion Loss (dB)	Average Power (W)	Peak Power (KW)	Flange	Material
284WRJL	2.60-3.95	WR284	200	1.20	0.3	600	600	FDP32/ FDM32	Al/Cu
229WRJL	3.30-4.90	WR229	200	1.20	0.3	600	600	FDP40/ FDM40	Al/Cu
187WRJL	3.95-5.85	WR187	200	1.20	0.3	600	600	FDP48/ FDM48	Al/Cu
159WRJL	4.90-7.05	WR159	300	1.25	0.3	500	150	FDP58/ FDM58	Al/Cu
137WRJL	5.85-8.20	WR137	300	1.25	0.3	500	150	FDP70/ FDM70	Al/Cu
112WRJL	7.05-10.0	WR112	300	1.25	0.3	400	150	FBP84/ FBM84/ FBE84	Al/Cu
90WRJL	8.20-12.4	WR90	300	1.25	0.3	400	150	FBP100/ FBM100/ FBE100	Al/Cu
75WRJL	10.0-15.0	WR75	500	1.25	0.3	200	10	FBP120/ FBM120/ FBE120	Al/Cu
62WRJL	12.4-18.0	WR62	1000	1.30	0.4	100	4	FBP140/ FBM140/ FBE140	Al/Cu
51WRJL	15.0-22.0	WR51	1000	1.30	0.4	100	3	FBP180/ FBM180/ FBE180	Al/Cu
42WRJL	18.0-26.5	WR42	2000	1.40	1.0	50	0.5	FBP220/ FBM220/ FBE220	Al/Cu
34WRJL	22.0-33.0	WR34	2000	1.40	1.0	30	0.3	FBP260/ FBM260/ FBE260	Al/Cu
28WRJL	26.5-40.0	WR28	2000	1.40	1.0	30	0.3	FBP320/ FBM320/ FBE320	Al/Cu

#### Ordering Information

P/N:

**42**

WR Size

**WRJL**

Product Code

AINFO manufactures wide variety of waveguide single joint assemblies specially designed for every customers unique requirements.

Waveguide Single Joint can be assembled with many types of flange. We also offer many other special configurations, length and hole size to meet special requirements.

**Example:** 42WRJL is a L type WR42 waveguide single joint.

Note:

1. Customization is available;
2. For detailed information of each L type waveguide single joint, please visit the website: [www.ainfoinc.com](http://www.ainfoinc.com).
3. Waveguide Dual-way Joint & Waveguide Three-way Joint also can be provide,for detailed information, pls. contact us.