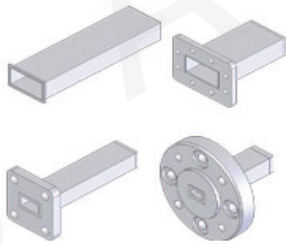


### Waveguide Low Power Load



Standard Models						
P/N	Frequency Range (GHz)	Waveguide	Power Handling (W)	VSWR	Flange	Material
975WLPL2	0.75-1.12	WR975	2	1.05	FDP9	Al
770WLPL2	0.96-1.45	WR770	2	1.05	FDP12	Al
650WLPL2	1.12-1.70	WR650	2	1.05	FDP14/FDM14	Al
510WLPL2	1.45-2.20	WR510	2	1.05	FDP18/FDM18	Al/Cu
430WLPL2	1.70-2.60	WR430	2	1.05	FDP22/FDM22	Al/Cu
340WLPL2	2.20-3.30	WR340	2	1.05	FDP26/FDM26	Al/Cu
284WLPL2	2.60-3.95	WR284	2	1.05	FDP32/FDM32	Al/Cu
229WLPL2	3.30-4.90	WR229	2	1.05	FDP40/FDM40	Al/Cu
187WLPL2	3.95-5.85	WR187	2	1.05	FDP48/FDM48	Al/Cu
159WLPL2	4.90-7.05	WR159	2	1.05	FDP58/FDM58	Al/Cu
137WLPL2	5.85-8.20	WR137	2	1.05	FDP70/FDM70	Al/Cu
112WLPL2	7.05-10.0	WR112	2	1.05	FBP84/FBM84/FBE84	Al/Cu
90WLPL2	8.20-12.4	WR90	2	1.05	FBP100/FBM100/FBE100	Al/Cu
75WLPL2	10.0-15.0	WR75	2	1.05	FBP120/FBM120/FBE120	Al/Cu
62WLPL2	12.4-18.0	WR62	2	1.05	FBP140/FBM140/FBE140	Al/Cu
51WLPL2	15.0-22.0	WR51	2	1.05	FBP180/FBM180/FBE180	Al/Cu
42WLPL2	18.0-26.5	WR42	2	1.05	FBP220/FBM220/FBE220	Al/Cu
34WLPL2	22.0-33.0	WR34	2	1.05	FBP260/FBM260/FBE260	Al/Cu
28WLPL2	26.5-40.0	WR28	2	1.05	FBP320/FBM320/FBE320	Al/Cu
22WLPL2	33.0-50.0	WR22	2	1.10	FUGP400	Cu
19WLPL2	40.0-60.0	WR19	2	1.10	FUGP500	Cu
15WLPL2	50.0-75.0	WR15	2	1.10	FUGP620	Cu
12WLPL2	60.0-90.0	WR12	2	1.10	FUGP740	Cu
10WLPL2	75.0-110.0	WR10	2	1.10	FUGP900	Cu

#### Ordering Information

P/N:

**975**

WR Size

**WLPL**

Product Code

**2**

Power Handling (W)

**Example:** 975WLPL2 is a WR975 waveguide low power load. Power is 2W.

Note:

1. Customization is available;
2. For detailed information of each waveguide low power load, please visit the website: [www.ainfoinc.com](http://www.ainfoinc.com).

AINFO manufactures wide variety of waveguide low power load assemblies specially designed for every customers unique requirements. Waveguide Low Power Load can be assembled with many types of flange. We also offer many other special configurations, length and hole size to meet special requirements.