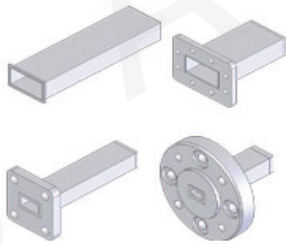


Waveguide Low Power Load



Standard Models						
P/N	Frequency Range (GHz)	Waveguide	Power Handling (W)	VSWR	Flange	Material
975WLPL2	0.75-1.12	WR975	2	1.05	FDP9	Al
770WLPL2	0.96-1.45	WR770	2	1.05	FDP12	Al
650WLPL2	1.12-1.70	WR650	2	1.05	FDP14/FDM14	Al
510WLPL2	1.45-2.20	WR510	2	1.05	FDP18/FDM18	Al/Cu
430WLPL2	1.70-2.60	WR430	2	1.05	FDP22/FDM22	Al/Cu
340WLPL2	2.20-3.30	WR340	2	1.05	FDP26/FDM26	Al/Cu
284WLPL2	2.60-3.95	WR284	2	1.05	FDP32/FDM32	Al/Cu
229WLPL2	3.30-4.90	WR229	2	1.05	FDP40/FDM40	Al/Cu
187WLPL2	3.95-5.85	WR187	2	1.05	FDP48/FDM48	Al/Cu
159WLPL2	4.90-7.05	WR159	2	1.05	FDP58/FDM58	Al/Cu
137WLPL2	5.85-8.20	WR137	2	1.05	FDP70/FDM70	Al/Cu
112WLPL2	7.05-10.0	WR112	2	1.05	FBP84/FBM84/FBE84	Al/Cu
90WLPL2	8.20-12.4	WR90	2	1.05	FBP100/FBM100/FBE100	Al/Cu
75WLPL2	10.0-15.0	WR75	2	1.05	FBP120/FBM120/FBE120	Al/Cu
62WLPL2	12.4-18.0	WR62	2	1.05	FBP140/FBM140/FBE140	Al/Cu
51WLPL2	15.0-22.0	WR51	2	1.05	FBP180/FBM180/FBE180	Al/Cu
42WLPL2	18.0-26.5	WR42	2	1.05	FBP220/FBM220/FBE220	Al/Cu
34WLPL2	22.0-33.0	WR34	2	1.05	FBP260/FBM260/FBE260	Al/Cu
28WLPL2	26.5-40.0	WR28	2	1.05	FBP320/FBM320/FBE320	Al/Cu
22WLPL2	33.0-50.0	WR22	2	1.10	FUGP400	Cu
19WLPL2	40.0-60.0	WR19	2	1.10	FUGP500	Cu
15WLPL2	50.0-75.0	WR15	2	1.10	FUGP620	Cu
12WLPL2	60.0-90.0	WR12	2	1.10	FUGP740	Cu
10WLPL2	75.0-110.0	WR10	2	1.10	FUGP900	Cu

Ordering Information

P/N:

975

WR Size

WLPL

Product Code

2

Power Handling (W)

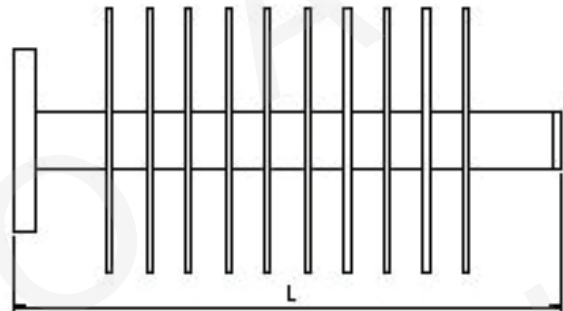
Example: 975WLPL2 is a WR975 waveguide low power load. Power is 2W.

Note:

1. Customization is available;
2. For detailed information of each waveguide low power load, please visit the website: www.ainfoinc.com.

AINFO manufactures wide variety of waveguide low power load assemblies specially designed for every customers unique requirements. Waveguide Low Power Load can be assembled with many types of flange. We also offer many other special configurations, length and hole size to meet special requirements.

Waveguide Medium Power Load



Standard Models

P/N	Frequency Range (GHz)	Waveguide	Power Handling (W)	VSWR	Flange	Material
510WMPLXX	1.45-2.20	WR510	100	1.25	FDP18/FDM18	Al/Cu
430WMPLXX	1.70-2.60	WR430	100	1.25	FDP22/FDM22	Al/Cu
340WMPLXX	2.20-3.30	WR340	100	1.25	FDP26/FDM26	Al/Cu
284WMPLXX	2.60-3.95	WR284	50/100	1.25	FDP32/FDM32	Al/Cu
229WMPLXX	3.30-4.90	WR229	50/100	1.25	FDP40/FDM40	Al/Cu
187WMPLXX	3.95-5.85	WR187	50/100	1.25	FDP48/FDM48	Al/Cu
159WMPLXX	4.90-7.05	WR159	50/100	1.25	FDP58/FDM58	Al/Cu
137WMPLXX	5.85-8.20	WR137	50/100	1.25	FDP70/FDM70	Al/Cu
112WMPLXX	7.05-10.0	WR112	50/100	1.25	FBP84/FBM84/FBE84	Al/Cu
90WMPLXX	8.20-12.4	WR90	50/100	1.25	FBP100/FBM100/FBE100	Al/Cu
75WMPLXX	10.0-15.0	WR75	50/100	1.25	FBP120/FBM120/FBE120	Al/Cu
62WMPLXX	12.4-18.0	WR62	50/100	1.25	FBP140/FBM140/FBE140	Al/Cu
51WMPLXX	15.0-22.0	WR51	50/100	1.25	FBP180/FBM180/FBE180	Al/Cu
42WMPLXX	18.0-26.5	WR42	50/100	1.25	FBP220/FBM220/FBE220	Al/Cu
34WMPLXX	22.0-33.0	WR34	50/100	1.25	FBP260/FBM260/FBE260	Al/Cu
28WMPLXX	26.5-40.0	WR28	50/100	1.25	FBP320/FBM320/FBE320	Al/Cu

Ordering Information

P/N:

510

WR
Size

WMPL

Product
Code

XX

Power
Handling
(W)

Example: 510WMPL100 is a WR510 waveguide medium power load. Power is 100W.

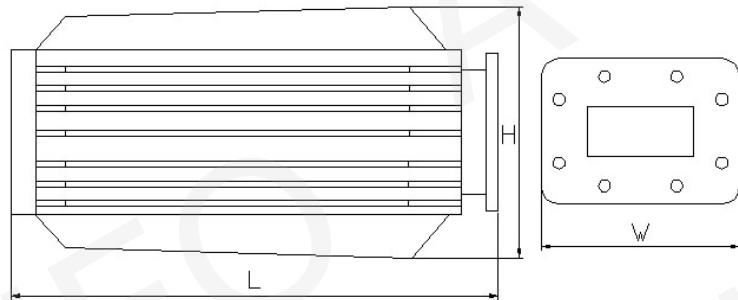
Note:

1. Customization is available;
2. For detailed information of each waveguide medium power load, please visit the website: www.ainfoinc.com.

AINFO manufactures wide variety of waveguide medium power load assemblies specially designed for every customers unique requirements.

Waveguide Medium Power Load can be assembled with many types of flange. We also offer many other special configurations, length and hole size to meet special requirements.

Waveguide High Power Load



Standard Models

P/N	Frequency Range (GHz)	Waveguide	Power Handling (W)	VSWR	Flange	Material
510WHPLXX	1.45-2.20	WR510	100-4000	1.35	FDP18/FDM18	Al/Cu
430WHPLXX	1.70-2.60	WR430	100-4000	1.35	FDP22/FDM22	Al/Cu
340WHPLXX	2.20-3.30	WR340	100-4000	1.35	FDP26/FDM26	Al/Cu
284WHPLXX	2.60-3.95	WR284	100-4000	1.35	FDP32/FDM32	Al/Cu
229WHPLXX	3.30-4.90	WR229	100-4000	1.35	FDP40/FDM40	Al/Cu
187WHPLXX	3.95-5.85	WR187	100-4000	1.35	FDP48/FDM48	Al/Cu
159WHPLXX	4.90-7.05	WR159	100-4000	1.35	FDP58/FDM58	Al/Cu
137WHPLXX	5.85-8.20	WR137	100-4000	1.35	FDP70/FDM70	Al/Cu
112WHPLXX	7.05-10.0	WR112	100-3000	1.35	FBP84/FBM84/FBE84	Al/Cu
90WHPLXX	8.20-12.4	WR90	100-3000	1.35	FBP100/FBM100/FBE100	Al/Cu
75WHPLXX	10.0-15.0	WR75	100-3000	1.35	FBP120/FBM120/FBE120	Al/Cu
62WHPLXX	12.4-18.0	WR62	100-1000	1.35	FBP140/FBM140/FBE140	Al/Cu
51WHPLXX	15.0-22.0	WR51	100-1000	1.35	FBP180/FBM180/FBE180	Al/Cu
42WHPLXX	18.0-26.5	WR42	100-600	1.35	FBP220/FBM220/FBE220	Al/Cu
34WHPLXX	22.0-33.0	WR34	100-600	1.35	FBP260/FBM260/FBE260	Al/Cu
28WHPLXX	26.5-40.0	WR28	100-600	1.35	FBP320/FBM320/FBE320	Al/Cu

Ordering Information

P/N:

510 **WHPL** **XX**
 WR Size Product Code Power Handling (W)

Example: 510WHPL4000 is a WR510 waveguide high power load. Power is 4000W.

Note:

1. Customization is available;
2. For detailed information of each waveguide high power load, please visit the website: www.ainfoinc.com.

AINFO manufactures wide variety of waveguide high power load assemblies specially designed for every customers unique requirements. Waveguide High Power Load can be assembled with many types of flange. We also offer many other special configurations, length and hole size to meet special requirements.