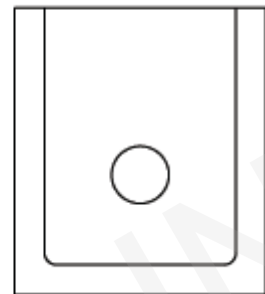
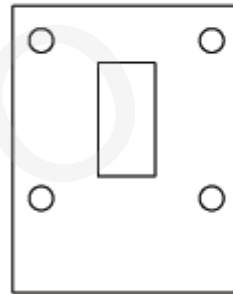
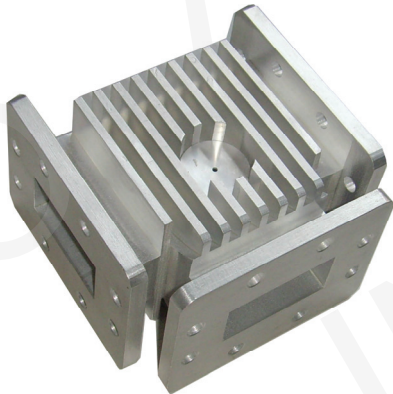


Waveguide Circulator



Standard Models									
P/N	Frequency Range (GHz)	Waveguide	Band Width (MHz)	Insertion Loss (dB)	Isolation (dB)	VSWR	Average Power (W)	Operating Temp. (°C)	Flange
284WCIC	2.70-3.10	WR284	Full	0.5	20	1.25	200	-55~+85	FDP32/ FDM32
187WCIC	4.4-5.0	WR187	Full	0.3	20	1.25	600	-55~+85	FDP48 FDM48
159WCIC	5.4-5.8	WR159	Full	0.4	20	1.25	200	-55~+85	FDP58/ FDM58
112WCIC	9.07-9.67	WR112	Full	0.5	20	1.25	300	-55~+85	FDP84/ FDM84
62WCIC	12.36-16.7	WR62	Full	0.5	20	1.25	100	-55~+85	FBP140/ FBM140/ FBE140
42WCIC	18.0-26.5	WR42	2000	0.4	20	1.25	50	-40~+70	FBP220/ FBM220/ FBE220
34WCIC	24.0-27.0	WR34	Full	0.4	20	1.25	50	-40~+70	FBP260/ FBM260/ FBE260

Ordering Information

P/N:

284

WR Size

WCIC

Product
Code

AINFO manufactures wide variety of waveguide circulator assemblies specially designed for every customers unique requirements.

Waveguide Circulator can be assembled with many types of flange. We also offer many other special configurations, length and hole size to meet special requirements.

Example: 284CICI is a WR284 waveguide circulator.

Note:

1. Customization is available;
2. For detailed information of each waveguide circulator, please visit the website: www.ainfoinc.com.