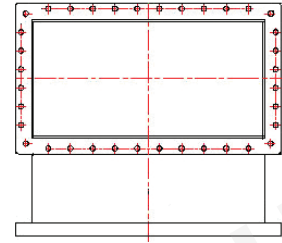
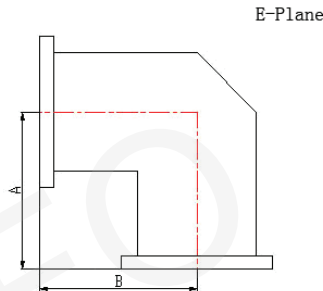
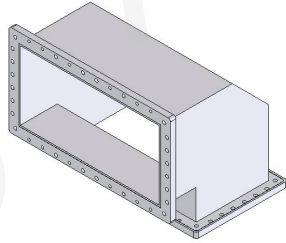


Miter Bend Waveguide (90° E-Plane)



Standard Models

P/N	Frequency Range (GHz)	Waveguide	VSWR	Flange	Material
975WTEB-150-150	0.75-1.12	WR975	1.15	FDP9	Al
770WTEB-100-100	0.96-1.45	WR770	1.15	FDP12	Al
650WTEB-100-100	1.12-1.70	WR650	1.15	FDP14/FDM14	Al
510WTEB-80-80	1.45-2.20	WR510	1.15	FDP18/FDM18	Al/Cu
430WTEB-80-80	1.70-2.60	WR430	1.15	FDP22/FDM22	Al/Cu
340WTEB-60-60	2.20-3.30	WR340	1.15	FDP26/FDM26	Al/Cu
284WTEB-50-50	2.60-3.95	WR284	1.15	FDP32/FDM32	Al/Cu
229WTEB-40-40	3.30-4.90	WR229	1.15	FDP40/FDM40	Al/Cu
187WTEB-40-40	3.95-5.85	WR187	1.15	FDP48/FDM48	Al/Cu
159WTEB-40-40	4.90-7.05	WR159	1.15	FDP58/FDM58	Al/Cu
137WTEB-30-30	5.85-8.20	WR137	1.15	FDP70/FDM70	Al/Cu
112WTEB-25-25	7.05-10.0	WR112	1.15	FBP84/FBM84/FBE84	Al/Cu
90WTEB-20-20	8.20-12.4	WR90	1.15	FBP100/FBM100/FBE100	Al/Cu
75WTEB-20-20	10.0-15.0	WR75	1.15	FBP120/FBM120/FBE120	Al/Cu
62WTEB-20-20	12.4-18.0	WR62	1.15	FBP140/FBM140/FBE140	Al/Cu
51WTEB-20-20	15.0-22.0	WR51	1.15	FBP180/FBM180/FBE180	Al/Cu
42WTEB-20-20	18.0-26.5	WR42	1.15	FBP220/FBM220/FBE220	Al/Cu
34WTEB-20-20	22.0-33.0	WR34	1.15	FBP260/FBM260/FBE260	Al/Cu
28WTEB-15-15	26.5-40.0	WR28	1.15	FBP320/FBM320/FBE320	Al/Cu

Ordering Information

P/N:

340 **WTEB** - **A** - **B**
 WR Size Product Code Size A (mm) Size B (mm)

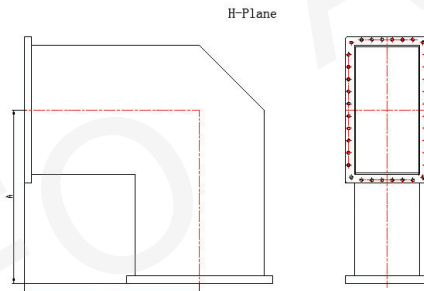
Example: 340WTEB-60-60 is a WR340 90° E-Plane Miter Bend Waveguide. Size A is 60mm, B is 60mm.

AINFO manufactures wide variety of miter bend waveguide assemblies specially designed for every customers unique requirements. Miter Bend Waveguide can be assembled with many types of flange. Basic styles in bend include miter and radius 90° bends.

Note:

1. Customization is available;
2. For detailed information of each 90° E-Plane miter bend waveguide, please visit the website: www.ainfoinc.com.

Miter Bend Waveguide (90° H-Plane)



Standard Models					
P/N	Frequency Range (GHz)	Waveguide	VSWR	Flange	Material
975WTHB-250-250	0.75-1.12	WR975	1.15	FDP9	Al
770WTHB-200-200	0.96-1.45	WR770	1.15	FDP12	Al
650WTHB-180-180	1.12-1.70	WR650	1.15	FDP14/FDM14	Al
510WTHB-150-150	1.45-2.20	WR510	1.15	FDP18/FDM18	Al/Cu
430WTHB-80-80	1.70-2.60	WR430	1.15	FDP22/FDM22	Al/Cu
340WTHB-60-60	2.20-3.30	WR340	1.15	FDP26/FDM26	Al/Cu
284WTHB-50-50	2.60-3.95	WR284	1.15	FDP32/FDM32	Al/Cu
229WTHB-40-40	3.30-4.90	WR229	1.15	FDP40/FDM40	Al/Cu
187WTHB-40-40	3.95-5.85	WR187	1.15	FDP48/FDM48	Al/Cu
159WTHB-40-40	4.90-7.05	WR159	1.15	FDP58/FDM58	Al/Cu
137WTHB-30-30	5.85-8.20	WR137	1.15	FDP70/FDM70	Al/Cu
112WTHB-25-25	7.05-10.0	WR112	1.15	FBP84/FBM84/FBE84	Al/Cu
90WTHB-20-20	8.20-12.4	WR90	1.15	FBP100/FBM100/FBE100	Al/Cu
75WTHB-20-20	10.0-15.0	WR75	1.15	FBP120/FBM120/FBE120	Al/Cu
62WTHB-20-20	12.4-18.0	WR62	1.15	FBP140/FBM140/FBE140	Al/Cu
51WTHB-20-20	15.0-22.0	WR51	1.15	FBP180/FBM180/FBE180	Al/Cu
42WTHB-20-20	18.0-26.5	WR42	1.15	FBP220/FBM220/FBE220	Al/Cu
34WTHB-20-20	22.0-33.0	WR34	1.15	FBP260/FBM260/FBE260	Al/Cu
28WTHB-15-15	26.5-40.0	WR28	1.15	FBP320/FBM320/FBE320	Al/Cu

Ordering Information

P/N:

340 **WTHB** - **A** - **B**
 WR Size Product Code Size A (mm) Size B (mm)

Example: 340WTHB-60-60 is a WR340 90° H-Plane Miter Bend Waveguide. Size A is 60mm, B is 60mm.

Note:

1. Customization is available;
2. For detailed information of each 90° H-Plane miter bend waveguide, please visit the website: www.ainfoinc.com.

AINFO manufactures wide variety of miter bend waveguide assemblies specially designed for every customers unique requirements. Miter Bend Waveguide can be assembled with many types of flange. The available materials include brass and aluminum. Basic styles in bend include miter and radius 90° bends.