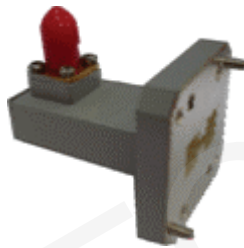
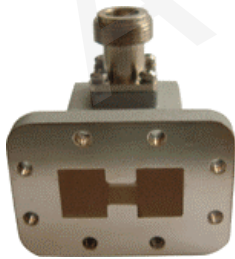


Double Ridge Waveguide to Coaxial Adapter



Standard Models

| P/N | Frequency Range (GHz) | Waveguide | VSWR | Connector |
|-----------|-----------------------|-----------|------|-----------|
| 250DRWCAN | 2.6-7.8 | WRD250D30 | 1.50 | N-F |
| 350DRWCAN | 3.5-8.2 | WRD350D24 | 1.50 | N-F |
| 475DRWCAN | 4.75-11.0 | WRD475D24 | 1.50 | N-F |
| 580DRWCAS | 5.8-16.0 | WRD580D28 | 1.50 | SMA-F |
| 650DRWCAS | 6.5-18.0 | WRD650D28 | 1.50 | SMA-F |
| 750DRWCAS | 7.5-18.0 | WRD750D24 | 1.60 | SMA-F |
| 110DRWCAK | 11.0-26.5 | WRD110C24 | 1.80 | 2.92K-F |
| 180DRWCAK | 18.0-40.0 | WRD180C24 | 1.80 | 2.92K-F |

Ordering Information

P/N:

250 **DRWCAN**
 WR Product
 Size Code

Example: 250DRWCAN is a WRD250D30 double ridge waveguide to coaxial adapter(N type Female connector).

Note:

1. Customization is available;
2. For detailed information of each double ridge waveguide to coaxial adapter, please visit the website: www.ainfoinc.com.

AINFO manufactures wide variety of double ridge waveguide to coaxial adapter assemblies specially designed for every customers unique requirements. Double Ridge Waveguide to Coaxial Adapter can be assembled with many types of flange. We also offer many other special configurations, length and hole size to meet special requirements.