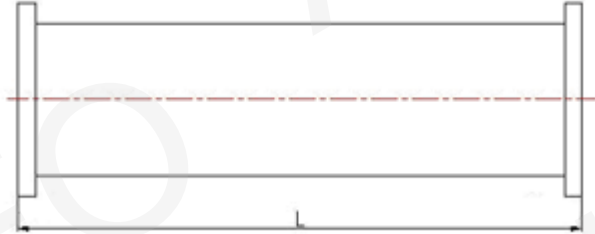
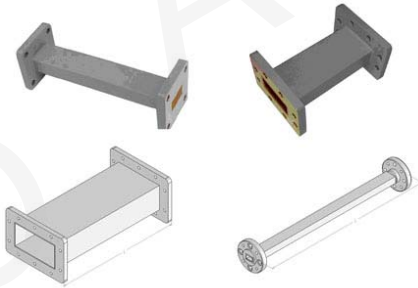


Straight Waveguide



Standard Models

P/N	Frequency Range (GHz)	Waveguide	VSWR	Length (mm)	Flange	Material
975WAL-500	0.75-1.12	WR975	1.05	500	FDP9	Al
770WAL-500	0.96-1.45	WR770	1.05	500	FDP12	Al
650WAL-500	1.12-1.70	WR650	1.05	500	FDP14/FDM14	Al
510WAL-500	1.45-2.20	WR510	1.05	500	FDP18/FDM18	Al
430WAL-500	1.70-2.60	WR430	1.05	500	FDP22/FDM22	Al/Cu
340WAL-500	2.20-3.30	WR340	1.05	500	FDP26/FDM26	Al/Cu
284WAL-200	2.60-3.95	WR284	1.05	200	FDP32/FDM32	Al/Cu
229WAL-200	3.30-4.90	WR229	1.05	200	FDP40/FDM40	Al/Cu
187WAL-200	3.95-5.85	WR187	1.05	200	FDP48/FDM48	Al/Cu
159WAL-200	4.90-7.05	WR159	1.05	200	FDP58/FDM58	Al/Cu
137WAL-200	5.85-8.20	WR137	1.05	200	FDP70/FDM70	Al/Cu
112WAL-200	7.05-10.0	WR112	1.05	200	FBP84/FBM84/FBE84	Al/Cu
90WAL-100	8.20-12.4	WR90	1.05	100	FBP100/FBM100/FBE100	Al/Cu
75WAL-100	10.0-15.0	WR75	1.05	100	FBP120/FBM120/FBE120	Al/Cu
62WAL-100	12.4-18.0	WR62	1.05	100	FBP140/FBM140/FBE140	Al/Cu
51WAL-100	15.0-22.0	WR51	1.05	100	FBP180/FBM180/FBE180	Al/Cu
42WAL-100	18.0-26.5	WR42	1.05	100	FBP220/FBM220/FBE220	Al/Cu
34WAL-100	22.0-33.0	WR34	1.05	100	FBP260/FBM260/FBE260	Al/Cu
28WAL-100	26.5-40.0	WR28	1.05	100	FBP320/FBM320/FBE320	Al/Cu
22WAL-50	33.0-50.0	WR22	1.10	50	FUGP400	Cu
19WAL-50	40.0-60.0	WR19	1.10	50	FUGP500	Cu
15WAL-50	50.0-75.0	WR15	1.10	50	FUGP620	Cu
12WAL-50	60.0-90.0	WR12	1.10	50	FUGP740	Cu
10WAL-50	75.0-110.0	WR10	1.10	50	FUGP900	Cu

Ordering Information

P/N:

975 **WAL** - **L**
 WR Size Product Code Length (mm)

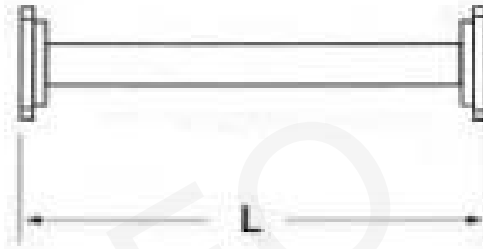
Example: 975WAL-500 is a WR975 straight waveguide. Length is 500mm.

AINFO manufactures wide variety of straight waveguide assemblies specially designed for every customers unique requirements. Straight Waveguide can be assembled with many types of flange. We also offer many other special configurations, length and hole size to meet special requirements.

Note:

1. Customization is available;
2. For detailed information of each straight waveguide, please visit the website: www.ainfoinc.com

Double Ridge Straight Waveguide



Standard Models				
P/N	Frequency Range (GHz)	Waveguide	VSWR	Length (XXX) (mm)
250DRWAL-XXX	2.6-7.8	WRD250D30	1.15	Customized
350DRWAL-XXX	3.5-8.2	WRD350D24	1.15	Customized
475DRWAL-XXX	4.75-11.0	WRD475D24	1.15	Customized
580DRWAL-XXX	5.8-16.0	WRD580D28	1.15	Customized
650DRWAL-XXX	6.5-18.0	WRD650D28	1.15	Customized
750DRWAL-XXX	7.5-18.0	WRD750D24	1.15	Customized
180DRWAL-XXX	18.0-40.0	WRD180C24	1.15	Customized

Ordering Information

P/N: 250 DRWAL - XXX
 WR Size Product Length
 Code (mm)

Example: 250DRWAL-500 is a WRD250D30 double ridge straight waveguide. Length is 500mm.

Note:
 1. Customization is available;
 2. For detailed information of each double ridge straight waveguide, please visit the website: www.ainfoinc.com

AINFO manufactures wide variety of double ridge straight waveguide assemblies specially designed for every customers unique requirements. Double Ridge Straight Waveguide can be assembled with many types of flange. We also offer many other special configurations, length and hole size to meet special requirements.